

7073EE Keypad Operation/Installation

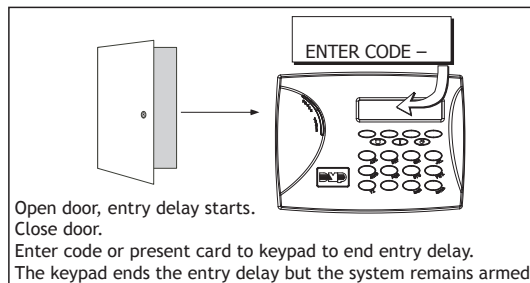
Description:

The 7073EE Keypad has been designed to provide specific entrance and exit features for building access in retail and other types of businesses. The 7073EE allows a manager to enter the store in the morning, creating an entry delay, then enter their code which ends the entry delay and leaves the system armed. Second, it allows employees to exit the building at night when the perimeter is armed. The zone 2 soft shunt operation is used with a countdown display and cadence occurring during the soft shunt.

Keypad Entry Delay Process

When the keypad has its armed LED on, and the door attached to zone 2 is opened, the entry delay starts. During entry delay, the keypad sounds an entry tone and displays ENTER CODE - . Type in your code or present your card to the keypad. Once validated, the system ends the entry delay and the perimeter remains armed.

If zone 2 is still open after a valid code is entered, an alarm is indicated. If zone 2 is closed, the system resumes monitoring zone 2 until reopened, which starts the entry delay sequence again.



Keypad Exit Process

From the Status List, with the armed LED on, enter your code or present your card to the reader. Once the system validates the user code, the keypad displays:

OKAY TO EXIT
DELAY TIME:

The delay time counts down during which time the Zone 2 soft shunt operates to allow the door to be opened for exit. The door must be closed at the expiration of the delay time or an alarm is indicated.

Installation Instructions

The employee entry/exit door contact should be wired to zone 2 of this keypad.

Zone 2 should be programmed to the perimeter area of the system as a night type zone. Do not use Exit type for this zone, the keypad simulates the entry delay.

The keypad address should be programmed to display the Perimeter area in Display Areas of Device Setup (XR100/XR500).

Operational Notes

The keypad simulates the entry delay when zone 2 opens, but continues to report a normal condition to the control panel for zone 2.

The special entry and exit features described above only occur when the armed LED is on.

The delay time for entry and exit process is the Soft Shunt delay programmed into the keypad (default is 60 seconds).

The keypad zone 3 Request to Exit feature should not be used.

Access Areas in Device Setup should not be programmed for this keypad address (XR100/XR500).

Door Propped programming should not be turned on for zone 2 on this keypad (XR100/XR500).

The standard door strike relay operates for the programmed Device Setup Strike Time (XR100/XR500) when the user code is entered from the keypad status list or during the simulated entry delay. However, the door strike relay is not normally used for this application.

The code used for entry and exit must be authorized for Door Access.

