

INSTALLATION GUIDE



277 Trouble Sounder

GET STARTED

The Model 277 Trouble Sounder is an audible trouble alert that may be installed in place of the Model 893A Module Trouble Alert Sounder.

What's Included

- ▶ 277 Trouble Sounder

Processor Fail Alert

The 277 Trouble Sounder monitors the keypad bus to sound an alert whenever the keypad bus is faulted.

The 277 also sounds a trouble alert whenever the panel processor is reset using the RESET header or the processor stops functioning.

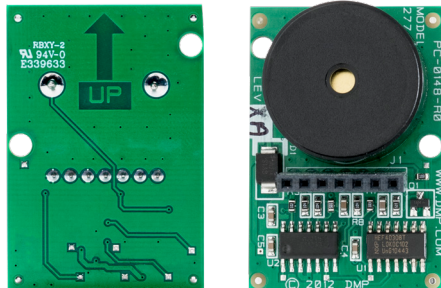
INSTALLATION

1 Install the Sounder



Warning: Ground yourself before handling the panel. To discharge static, touch any grounded metal, such as the enclosure, before touching the panel. Also remove all AC and Battery power from the panel before installing or connecting any modules, cards, or wires to the panel.

Taking note of the “UP” arrow to properly orient the 277, slide the connector on the 277 onto the panel 893A or 277 connector.



**Figure 1: 277 Trouble Sounder
Front and Rear Views**

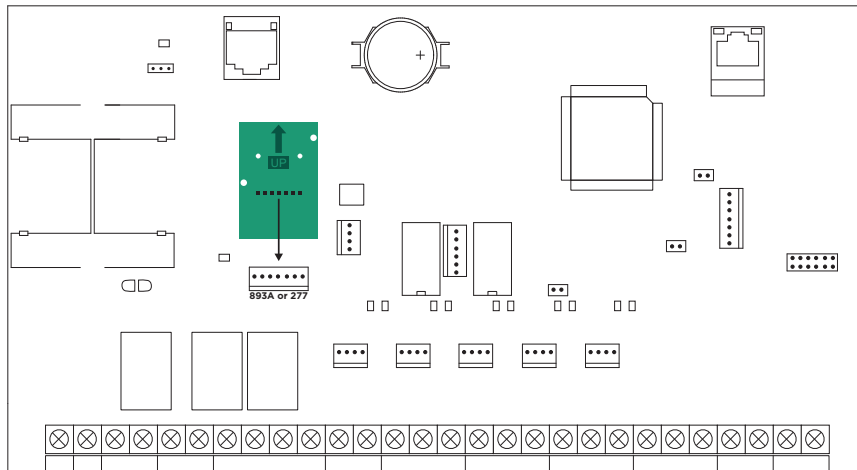


Figure 2: 277CAN Trouble Sounder to Panel Connections

SPECIFICATIONS

Operating Voltage	12 VDC from the panel
Current Draw	5 mA

CERTIFICATIONS

Underwriters Laboratory (UL) Listed


ANSI/UL 636	Holdup Alarm Units and Systems Accessory
ANSI/UL 1023	Household Burglar
ANSI/UL 1635	Digital Burglar
ANSI/UL 985	Household Fire Warning
ANSI/UL 864	Fire Protective Signaling 9th Edition

FCC Information

This device complies with Part 15 of the FCC Rules. Operation is subject to the following two conditions:

1. This device may not cause harmful interference, and
2. This device must accept any interference received, including interference that may cause undesired operation.

Changes or modifications made by the user and not expressly approved by the party responsible for compliance could void the user's authority to operate the equipment.

 **Note:** This equipment has been tested and found to comply with the limits for a Class B digital device, pursuant to part 15 of the FCC Rules. These limits are designed to provide reasonable protection against harmful interference in a residential installation. This equipment generates, uses and can radiate radio frequency energy and, if not installed and used in accordance with the instructions, may cause harmful interference to radio communications. However, there is no guarantee that interference will not occur in a particular installation. If this equipment does cause harmful interference to radio or television reception, which can be determined by turning the equipment off and on, the user is encouraged to try to correct the interference by one or more of the following measures:

- Reorient or relocate the receiving antenna.
- Increase the separation between the equipment and receiver.
- Connect the equipment into an outlet on a circuit different from that to which the receiver is connected.
- Consult the dealer or an experienced radio/TV technician for help.

Industry Canada Information

This device complies with Industry Canada License-exempt RSS standard(s). Operation is subject to the following two conditions:

1. This device may not cause interference, and
2. This device must accept any interference, including interference that may cause undesired operation of the device.

Le présent appareil est conforme aux CNR d'Industrie Canada applicables aux appareils radio exempts de licence. L'exploitation est autorisée aux deux conditions suivantes:

1. l'appareil ne doit pas produire de brouillage, et
2. l'utilisateur de l'appareil doit accepter tout brouillage radioélectrique subi, même si le brouillage est susceptible d'en compromettre le fonctionnement.



Designed, engineered, and
manufactured in Springfield, MO
using U.S. and global components.

LT-1304 21344

© 2021

INTRUSION • FIRE • ACCESS • NETWORKS

2500 North Partnership Boulevard
Springfield, Missouri 65803-8877

800.641.4282 | DMP.com