

## **Remote Link & System Link Version 1.21 Feature Update**

### **January 2005**

---

#### **Version 1.21 Software Update**

Remote Link and System Link software version 1.21 (1/3/05) is now available with the purchase of Link Server. This version is an update from the 1.20 (12/9/04) software previously shipped and contains new features.

Remote Link and System Link Version 1.20 (12/9/04) software will continue to be available on the DMP Dealer Direct Website at <http://dmp.com/dealer> and will continue to ship from the factory until the end of January 2005.

#### **Features**

##### **Link Server Support**

Remote Link now supports the Link Server software to be released in January 2005. Link Server allows more than three Remote Link computers to perform extensive database operations at the same time. Refer to the Link Server Installation Sheet (LT-0837).

##### **Database Location**

**Computer Hard Drive:** Enter the path to the Remote Link database location on the computer or network hard drive. If you would like to store your Remote Link database in a different location than the default folder, type the location in the **Database Location** field. You may also browse for the folder where you would like to place your Remote Link database by clicking on the button just to the right of the **Database Location** field with three small dots.

The database may also be stored on a remote network server. This option allows more than three Remote Link computers to perform extensive database operations at the same time. Refer to the Link Server Installation Sheet (LT-0837).

**Network Server:** To use Remote Link with Link Server, enter the network server IP address and port number to the Remote Link database location. The default port number is 12005. Check with your Link Server administrator for the correct IP address and port number and enter the information using the following format:

server:xxx.xxx.xxx.xxx:ppppp  
x = IP Address  
p = Port Number



---

Note: Standard Remote Link operation supports database access for up to three computers as long as only one computer at a time performs extensive database access operations such as uploading or downloading information from a panel. If more computers or more extensive simultaneous database access is required, it is recommended the Link Server software be installed on a network server.

---

## Database Merge

Remote Link now offers the ability to merge another Remote Link database with an existing one.

### Merge Database

**Merge** allows you to combine another Remote Link database with an existing database.

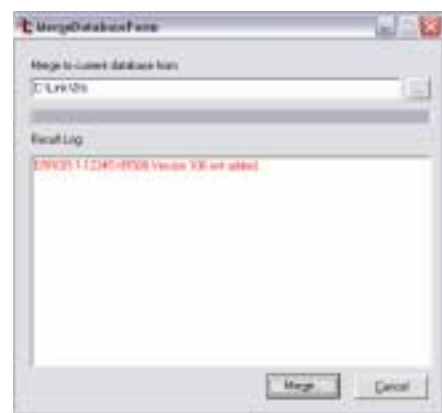
Go to **System > Configure > Remote Link** to open the **Remote Link Configuration** window. Click on the **Database** tab and then click the **Merge** button to open the **Merge Database** window.

In the **Merge Database** window, enter the path to another Remote Link database to merge with the existing database. You may also browse to the location of another Remote Link database by clicking on the button just to the right with three small dots. All of the accounts from the chosen database are copied and merged into the existing database.

**Note:** Only a database located on a local or network drive can be merged. A database located on a remote server cannot be merged.

**Note:** If an account being merged has the same receiver and account number as one in the existing Remote Link database, an error message displays and the account is not merged.

After following the instructions above, click **Merge** to complete the merge operation.



## Ordering the New Software

Remote Link and System Link software version 1.21 (1/3/05) is now available with the purchase of Link Server. Link Server can be obtained by calling DMP Customer Service at 1-800-641-4282.

Remote Link and System Link Version 1.20 (12/9/04) software will continue to be available on the DMP Dealer Direct Website at <http://dmp.com/dealer> and will continue to ship from the factory until the end of January 2005.