

Entré Security & Access Management Software July 2009

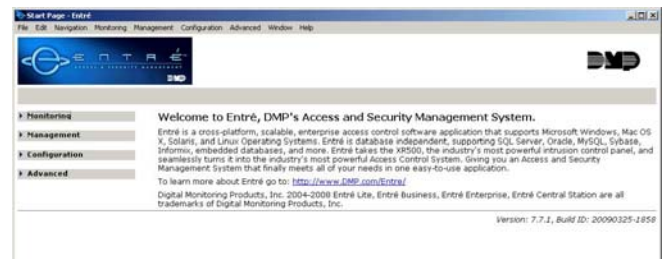
Version 7.7.1 Software Update

Effective July 2009, all Entré Security & Access Management software is being manufactured as Version 7.7.1 (6/18/09). This version is an update from the Version 7.6.2 (11/4/08) previously shipped and contains new features and updated operations.

New Features

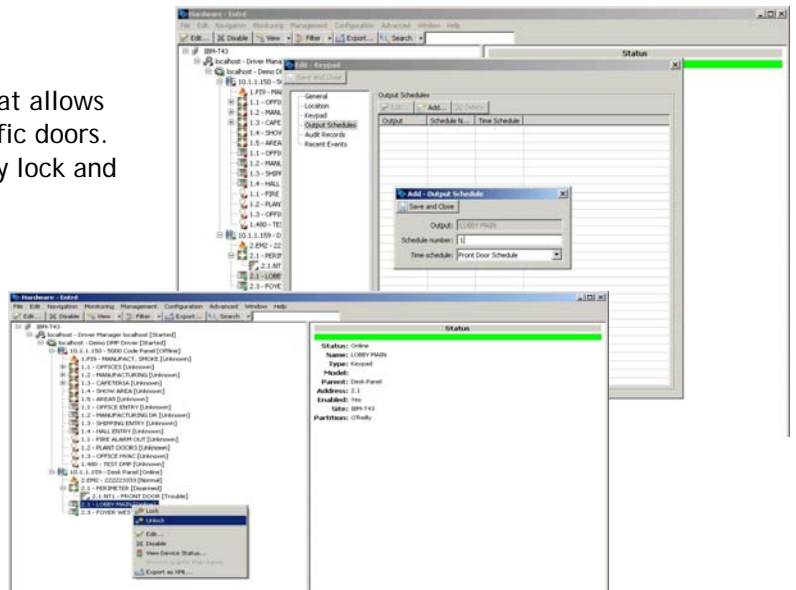
New Menu Structure

Entré now improves the classic menu with a new easy-to-use menu structure that conveniently groups individual menus into a functional category. Menus are now grouped into Monitoring, Management, Configuration and Advanced categories. For those who prefer the previous menu, it can be enabled with the Use Classic Module menu option.



Door Schedules

Entré now has a right-click menu on doors that allows users to create and assign schedules to specific doors. These schedules can be used to automatically lock and unlock doors.



Quick Launch Menu

Entré now has a quick launch menu where frequently used commands can be added as a convenience to the user. The menu adds items called widgets, that can initiate a specific hardware command or launch a commonly used software module.



Updated Operation

User Codes Beginning With Zero

Entré now correctly converts badges enrolled from an Admin reader that begin with leading zeros. Previously, Entré would truncate the leading zeros removing them from the user code that it sent to the XR500. This would result in the badge being denied access when presented to a card reader attached to the system.

PC Log Reports Support

Entré now properly handles the "Minutes Ago" string supplied from the panel when using PC Log Reports. Previously, Entré would ignore the Minutes Ago string and process any events as if they had just occurred.

Panel Supervision

Entré now uses the Checkin message from the panel for supervision rather than the Ping Interval. This requires one communication path to be programmed to send Checkin messages to the Entré computer. All others messages should be sent using PC Log Reports programming.


Lock/Unlock Door from Hardware Tree or Graphic Map

This version of Entré now supports a right-click lock and unlock command to any keypad in the system from the hardware tree or on a graphical map. Previously, Entré did not support locking and unlocking of doors from the software.

Upgrading/Ordering New Firmware

Entré Security & Access Management Software Version 7.7.1 update may be obtained by calling DMP Customer Service at 1-800-641-4282 and ordering ENTRE/UPDATE.

TU-0512 © 2009 Digital Monitoring Products, Inc.

	800-641-4282	INTRUSION • FIRE • ACCESS • NETWORKS
	www.dmp.com	2500 N. Partnership Boulevard
	Made in the USA	Springfield, Missouri 65803-8877