

## Remote Link and System Link January 2010

### Version 1.52 Software Update

Effective January 2010, Remote Link and System Link are being shipped as Version 1.52 (1/7/10) software. This version is an update from the Version 1.51 (10/8/09) software previously shipped and contains new features:

Remote Link Features:

- Saved Comparisons

XR100/XR500 Version 205 Panel Features:

- Remote Programming over Cellular
- 32 Character Names
- Path Information
- Remote Options GPRS APN
- Monthly Limit
- Device Types
- Device Number and Name
- 893A Second Line Prefix
- Exit Delay
- Fire Panel Slave Input
- Area Information enhancements
- Zone Information enhancements

Remote Link and System Link updates are available for download free of charge on the DMP Dealer Direct Website at <http://dmp.com/dealer>.

### Features

#### Saved Comparisons

A new option has been added to allow users to save, reload or delete selected compared accounts.

##### Saved Comparisons

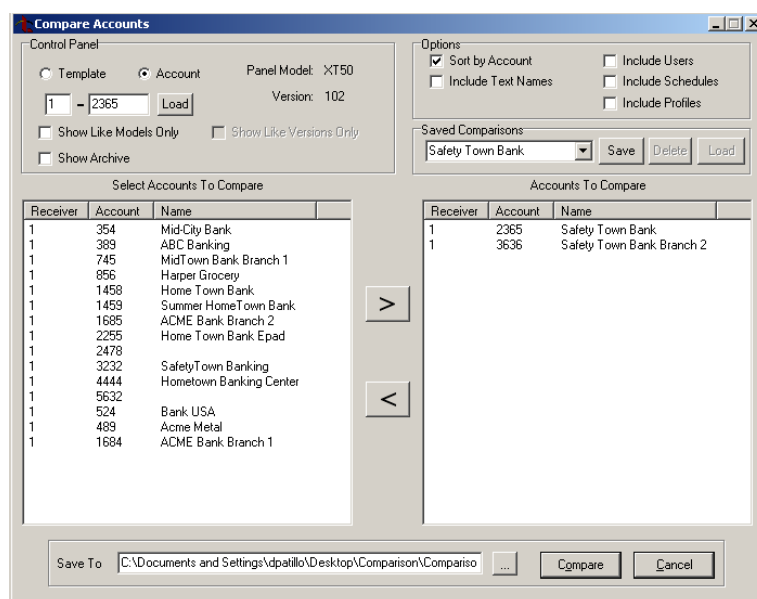
The Saved Comparisons option allows the selected compared accounts to be saved for future comparisons. This allows users to maintain a list of their past comparisons for re-use saving the time required to choose accounts to compare.



After selecting the accounts to compare, save the selected comparisons by typing a name directly into the drop-down menu box and clicking the Save button. The new comparison name displays in the drop-down menu.

To compare accounts with the same information as a saved comparison, select the comparison name from the drop-down menu and click on the Load button. The information from the selected comparison displays in the Accounts To Compare fields.

To delete a saved comparison from Remote Link, select the comparison name from the drop-down menu and click the Delete button.



The following features detailed in the remainder of this update are only available when using an XR100/XR500 panel with Version 205 or higher software.

## Remote Programming over Cellular

The XR500 now allows remote programming from Remote Link over cellular communication using a 463G Digital Cellular Communicator. This includes upload and download of programming files, trapping of panels, request of events, and panel commands such as arming/disarming.

Note 1: Remote programming is not available using the CellComRT Cellular Alarm Communicator. Therefore, remote programming using cellular communication is not available for the XR100 at this time.

Note 2: Remote update of a new software version to an XR500 is not available using cellular communication.

Note 3: It is highly recommended to upgrade Remote Link to at least version 1.52 in order to minimize any connectivity issues with remote cellular programming.

## 32 Character Names

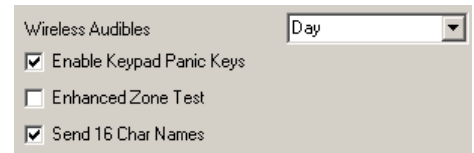
A new option has been added to System Options to allow name fields such as user names and zone names to be expanded from 16 characters to 32 character names.

**Send 16 Char Names:** This option allows the central stations to select being sent either the first 16 characters of the name field or the entire programmed name, up to 32 characters.

When selected, the first 16 characters of the name field are sent to the central station. If not selected, all characters entered in the name field up to the maximum of 32 characters are sent. The default is checked.

The fields affected by the new option are:

- User Names in User Menu
- Zone Name in Zone Information programming
- Area Name in Area Information programming
- User Profiles in User Menu
- Output Name in Output Information programming
- Group Name in Output Groups programming

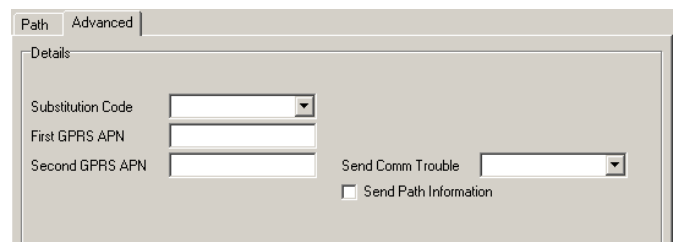


**Note:** Using 32 character names increases the length of the DMP Serial 3 message from the panel to the receiver. The SCS-1R receiver does not require an update to pass these messages to the Host Automation System of the Central Station. Before using names longer than 16 characters, determine whether the Host Automation System of your Central Station can accept 17 to 32 character names. If not, only use 16 character names.

## Path Information

A new option has been added to Communication for each path to allow each Serial 3 panel message to the receiver to include information about the communication path that was used to send the message.

**Send Path Information:** Check this box to have each panel message include path information such as path number, communication type, and path type. Default is unchecked.



## Remote Options GPRS APN

First and Second GPRS APN options have been added to the Remote Options section of programming. This allows programming of the GPRS APN in one menu in addition to allowing programming in each communication path. If the GPRS APN is changed in any option, the value changes for every instance.

## Monthly Limit

A new option has been added to Messaging Setup that limits excessive messages to cellular telephone numbers or email sent by CELL.

**Monthly Limit (XR100/XR500 Series Version 205 or higher):** This option displays if any programmed destination is a cell phone number using NET or CELL communication or an email address using CELL communication. If all destinations are email addresses using NET communication, this option does not display. This number limits the monthly incoming and outgoing SMS messages allowed to be sent or received by the panel.

A panel event that causes messages to be sent to destination cell phone numbers or destination email addresses is counted towards the panel's monthly limit. For example, if an alarm message is sent to a cell phone number and an email address using CELL communication, a total of 2 messages are counted towards the monthly limit for the panel. SMS messages sent from a cell phone to the panel, including status requests and SMS text commands, also count toward the monthly limit. The limit is reset at midnight on the 14th of every month. Range is from 0 to 999. When 0 is entered, there is no limit on the number of messages able to be sent or received by the panel. Default is 0.

---

**Note:** The SecureCom Wireless text plan selected for the panel should match or exceed the programmed Monthly Limit.

---

## Device Types

The STD device type of Device Setup has been divided to DOOR and KEYPAD to better describe door access control devices.

**Device Type:** This prompt allows you to specify that a device is installed at a particular address on the keypad bus.

- **None:** No device is connected to this address.
- **Door:** The device is an access control device and is either a keypad or a 733/734 Wiegand Interface Module.
- **Fire:** A Model 630F Remote Fire Command Center is connected to this address.
- **Keypad:** The device is either a keypad or a zone expander device.

## Device/User Number and Name

When the following messages are sent to the receiver they now include the address number and name of the keypad/expander where the event occurred. The account number sent in the message is the Area Account number programmed in Area Information for first area programmed in Display Areas for the device.

- Keypad two-button panic messages
- System Test messages
- Service Request messages
- Device missing/restore messages (account number in Communication used for LX-Bus devices)

In addition, when the following messages are sent to the receiver, they now include the user number and name of the user that performed the action.

- System Test messages
- Service Request messages
- Note: Version 1.52 of Remote Link is required when using Remote Link Alarm Monitoring.

## 893A Second Line Prefix

A new option has been include with the 893A programming in Advanced Communication to allow a prefix to be dialed before the second phone number.

**Second Line Prefix:** This option displays if the 893A option is selected. Enter up to a 3 digit prefix to be dialed before the second phone number. If no prefix is entered, the second phone number is dialed as originally entered.

## Exit Delay

Exit Delay range now allows the minimum to be programmed as 30 seconds to allow for very high security installations.

Previously the minimum was 45 seconds.

## Fire Panel Slave Input

A new option has been added to Zone Information programming to allow a fire zone to provide slave communication operation.

**Fire Panel Slave :** This option is available on Fire Zones (FI) only and allows a fire zone the ability to provide slave communication operation for a separate fire alarm control panel. If selected, this zone will transmit a restoral immediately when restored by the fire panel being monitored. A sensor reset is not required to generate the restoral message. If not selected, this zone will operate as a standard fire type zone and a sensor reset is required before the zone will return to normal.

☐ Swinger Bypass  
☐ Retard  
☐ Fast Response  
☐ Cross Zone  
☐ Priority Zone  
☐ Fire Panel Slave

**Note:** The Fire Panel Slave Input option is currently under investigation by UL for use in Commercial Fire applications and as of January 8<sup>th</sup>, 2010, is not approved for use. The listing is expected in February and will be announced.

## Area Information

The Area Information window for XR100/XR500 panels using Version 205 or higher has been reorganized. Options that apply to all areas of the system are now grouped into Global Settings.

Global Settings (applies to all areas)  
 Exit Delay   
 Burglary Bell Output   
 Early Morning Ambush

☒ Open/Close Reports  
☐ Closing Check  
☐ Closing Code

☐ Any Bypass  
☐ Area Schedules

Zone Information  

Number	Name	Type
5	BREAK ROOM	NT
6	BACK DOOR	..
7	VAULT DOOR	..

Standard | Action | Wireless | Advanced  
 Zone Number   
 Zone Name   
 Type   
 Area

## Zone Information

The Zone Information window for XR100/XR500 panels using Version 205 or higher has been reorganized. The options now appear on tabs organized by option type.

## Remote Arming

Remote arming using Remote Link is not permitted by ULC for the XR100 and XR500 Canadian Series panels.

## Updated Operation

### Account Groups Schedules

Account Groups now correctly sends schedules to accounts when more than one area schedule is programmed with the same shift.

### Cellular Activation Date

Remote Link now properly displays the Cellular Status for Level 400 SIM cards (Model 380-400). Previously, Remote Link would display 12-30-99 as the Cellular Status.

## Obtaining the New Software

Remote Link and System Link updates are available for download free of charge on the DMP Dealer Direct Website at <http://dmp.com/dealer>.