

Remote Link and System Link May 2012

Version 1.62 Software Update

Remote Link and System Link Version 1.62 (5/8/12) software is now available for download on the DMP Dealer Direct Website at <http://dmp.com/dealer>.

Effective May 11, 2012, all Remote Link and System Link software is being manufactured as Version 1.62 (5/8/12). This version is an update from the Version 1.61 (2/5/12) previously shipped and contains new features and updated operation.

Note: If Remote Link or System Link software is previous to Version 1.46, update to an intermediate version before updating to 1.62 (5/8/12).

Features

The following new features have been implemented to support the XTL and XT30/XT50 Series panels Version 110 software when used with the 738Z Z-Wave Interface Module. See the XTL and XT30/XT50 Series Version 110 (3/22/12) technical update (TU-0626) for additional information.

738Z Z-Wave Interface Module

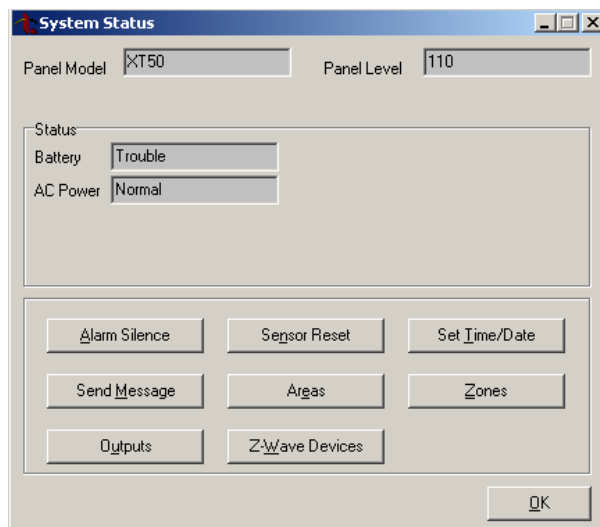
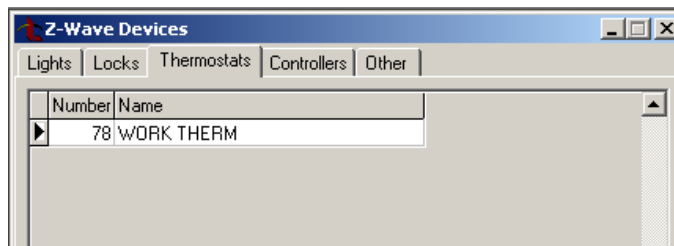
Display Z-Wave Devices

Remote Link now displays the Z-Wave devices programmed into the XTL and XT30/XT50 Series panels. Select **Panel > System Status** to open the **System Status** window. This window allows you to view the status of several system items from one convenient window.

Z-Wave Devices

Each tab displays the Z-Wave devices that are currently programmed into the panel. Select each tab to see the current list for that device type.

Request: Select the Request button to retrieve the list of Z-Wave devices currently programmed into the panel.

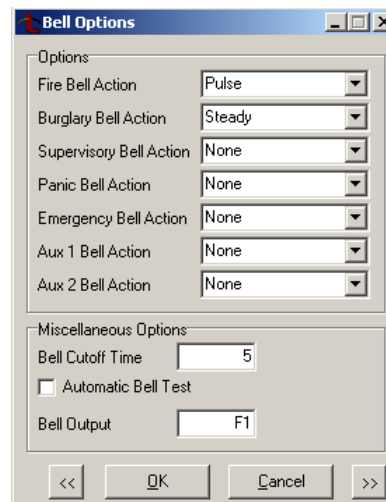


Programming Options to support 738Z

Bell Options

XT30/XT50 Series and XTL Version 110 software now allows Z-Wave Favorites (F1-F20) to be programmed as the Bell Output.

Bell Output (XT30/XT50/XTL): Enter the output/Favorite number to follow the panel bell terminal 5 operation for all action and off conditions. Enter 0 (zero) to disable the output.



Output Options

XT30/XT50 Series and XTL Version 110 software now allows Z-Wave Favorites (F1-F20) to be programmed as the output to activate with a panel event. These Favorite Actions provide Z-Wave Favorites to be triggered for the following panel events.

- Communication Failure
- Fire Alarm
- Fire Trouble
- Ambush
- Entry Delay
- Ready
- Armed*
- Burglary
- Late to Close
- Key Fob / Zone Output

* To use the Armed Output with a Favorite, you must program Favorites to allow for the system arming type.

Favorites:

For a Home/Away system:

- When the system is armed **AWAY**, the programmed Favorite activates.
- When the system is armed **SLEEP**, the programmed Favorite plus 1 is activated. For example, If the Armed Output is F05, F06 activates when Sleep is armed.
- When the system is armed **HOME**, the programmed Favorite plus 2 is activated. For example, If the Armed Output is F05, F07 activates when Home is armed.

For an All/Perimeter system:

- When the system is armed **ALL**, the programmed Favorite activates.
- When the system is armed **PERIMETER**, the programmed Favorite plus 1 is activated. For example, If the Armed Output is F05, F06 activates when Perimeter is armed.

For an Area system:

- When any area of the system is armed, the programmed Favorite activates.

In addition, the following outputs have been added to the Output Options programming for the XT30/XT50 Series and XTL panels.

Panic Alarm Output: Enter the output/Favorite number to turn on when any Panic type zone is placed in an alarm condition. The output is turned off after all Panic zones are restored from an alarm condition and a Sensor Reset is performed. Enter 0 (zero) to disable.

Note: For XT30/XT50 Series and XTL panels, if a wireless output is programmed, the panel sends the Panic Alarm or Test Cadence to the output for 5 minutes when a Panic Test is performed or a Panic Zone is placed in alarm.

Begin Exit Output (XT30, XT50, and XTL Version 110 or higher):

Enter the output or Favorite number to turn on when an exit delay time starts in any area of the system. The output turns off when the area arms or when the arming stops.

End Exit Output (XT30, XT50, and XTL Version 110 or higher): Enter the output or Favorite number to turn on when an exit delay time ends in any area of the system. The output turns off when the system disarms.

Disarmed Output: Enter the output/Favorite number to turn on when all areas of the panel are disarmed. The output turns off when the an area is armed. Enter 0 (zero) to disable this output.

Zone Information

XT30/XT50 Series and XTL Version 110 software now allows Z-Wave Favorites (F1-F20) to be programmed as the following outputs to activate when a zone condition changes. These Favorite Actions provide Z-Wave Favorites to be triggered for the following zone events.

- 1100 Series Key Fob buttons
- Disarmed Open
- Disarmed Short
- Armed Open
- Armed Short

Obtaining the New Software

Remote Link and System Link Version 1.62 (5/8/12) updates are available for download free of charge on the DMP Dealer Direct Website at <http://dmp.com/dealer>.