

Remote Link and System Link

August 2012

Version 1.65 Software Update

Effective August 7, 2012, all Remote Link and System Link software is being manufactured as Version 1.65 (8/3/12). This version is an update from the Version 1.63 (6/1/2012) previously shipped and contains new features and updated operation. If your current Remote Link or System Link software is previous to Version 1.46, update to Version 1.59 before updating to 1.65 (8/3/12).

Features

Z-Wave Energy Saving

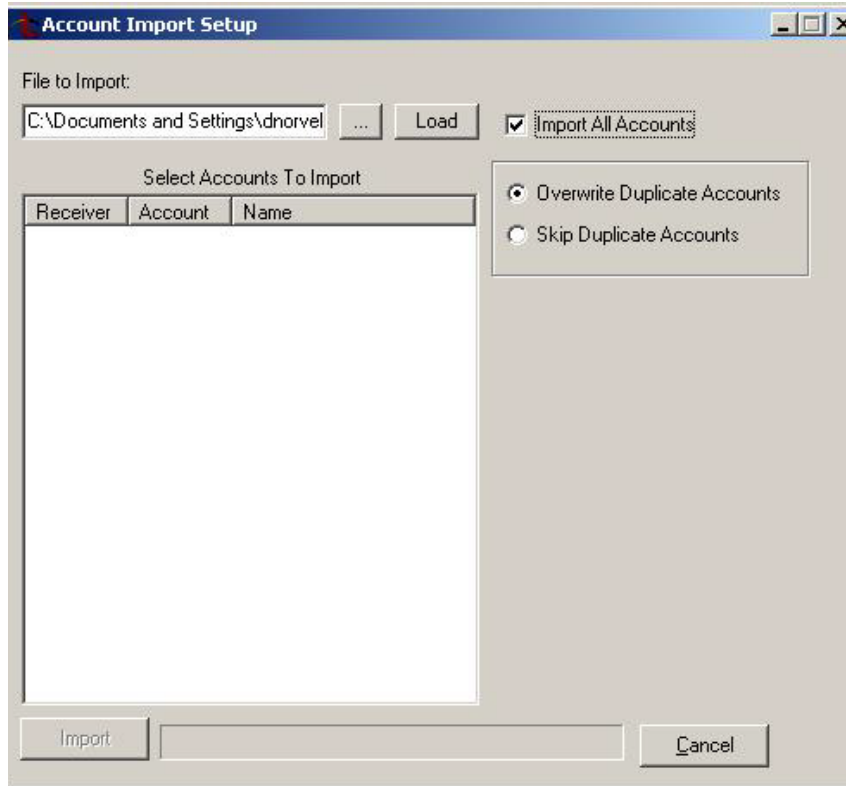
The following new energy saving features have been implemented to support the soon-to-be-released XTL and XT30/XT50 Series panels Version 112 software. See XTL and XT30/XT50 Series Version 112 Technical Update (TU-0643) for additional information after the software has been released.

Heat Saver and Cool Saver options have been added to Output Options programming. This feature allows the user to program their Z-Wave thermostat to a specific temperature when the system is armed All or Away.

Options	Outputs
Cutoff Outputs	Communication Fail Output
Cutoff Time Minutes	Fire Alarm Output
	Fire Trouble Output
	Panic Alarm Output
	Ambush Output
	Entry Output
	Begin Exit Output
	End Exit Output
	Ready Output
	Late to Close Output
	Armed Output
	Disarmed Output
	Burglary Output
	Arm-Alarm Output

Account Importing

Remote Link Version 1.65 provides a new option in Account Import Setup. Users now have the option to import all accounts in the selected file rather than choosing accounts from a list after the file has been loaded. When the user selects a file to import, the user can select the checkbox to Import All Accounts. If the user selects this option and then presses the load button, Remote Link does not display a list of accounts but prepares to import the entire file. The user can then choose to skip duplicate accounts or overwrite duplicate accounts with information from the selected file before beginning the import.



XR500 Series programming

Remote Link Version 1.65 provides new options for the soon-to-be-released XR500/XR100 Series panels Version 210 Software. See XR500/XR100 Series Version 210 Technical Update (TU-0650) for additional information after the software has been released.

Updated Operation


Export Accounts

Exporting a large database from Remote Link may have caused excessive use of the computer's system resources. As a result, Remote Link may have generated an error and failed to complete the export. Remote Link Version 1.65 (8/3/12) now processes exports in segments to avoid excessive use of system resources.

Obtaining the New Software

Remote Link and System Link Version 1.65 (8/3/12) updates are available for download free of charge on the DMP Dealer Direct Website at <http://dmp.com/dealer>.

TU-0653 © 2012 Digital Monitoring Products, Inc.

	800-641-4282	INTRUSION • FIRE • ACCESS • NETWORKS 2500 N. Partnership Boulevard Springfield, Missouri 65803-8877
	www.dmp.com	
	Made in the USA	