

Entré Security & Access Management Software

October 2014

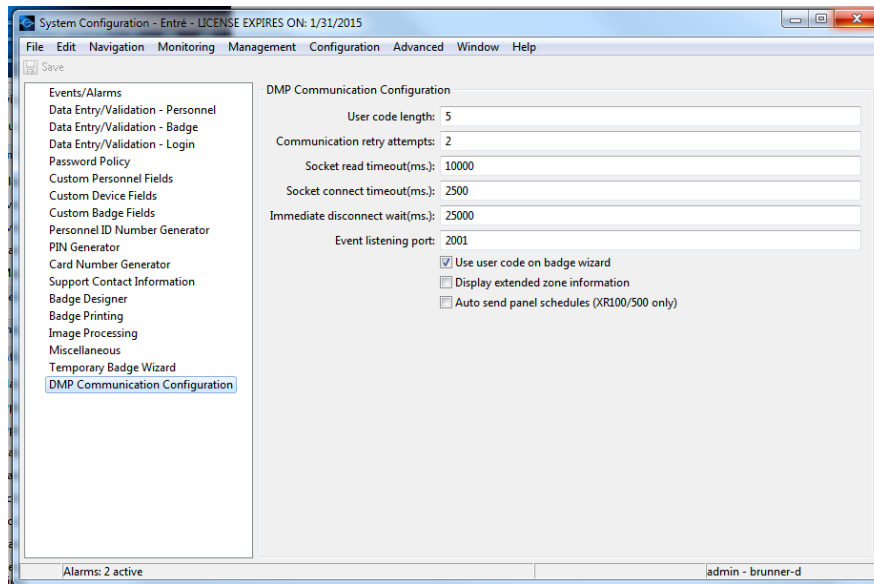
Version 7.9.3 D4 Software Update

Effective October 9, 2014, all Entré Security & Access Management software is being manufactured and shipped as Version 7.9.3 D4 (9/9/14). If your current Entre software is previous to Version 7.9.0, update to Version 7.9.0 before updating to 7.9.3 D4 (9/9/14).

Features

Event Listening Port

The Event Listening Port can now be manually changed from the default of 2001 using the System Configuration module.



Updated Operation

To resolve the following issues related to schedules, after Entre is updated from 7.9.3 D3 or 7.9.3 D2, schedules are automatically cleared and sent to all panels in the database the first time Entre is started.

Profile Schedules

In the previous Entre Version 7.9.3 D3 if clear schedules was selected when schedules were sent to an XR550 Series panel, schedule assignments in profiles were not sent. Entre no longer clears the Profile schedule assignments when clearing schedules.

Time Schedules

Time schedules created in Version 7.9.3 D2 were incorrectly sent to the panel after Entre was updated to Version 7.9.3 D3. All schedules were sent as schedule 1 and only the last schedule sent was retained by the panel.

Deleting Schedules

Time schedules created in Version 7.9.3 D2 could not be deleted after Entre was updated to Version 7.9.3 D3.



New Schedules

When a new schedule was created and sent to a panel, Entre unnecessarily sent previously programmed panel schedules to all panels in the database.


System Configuration

Occasionally, an error message was displayed when exiting the System Configuration module. When this occurred the client interface may have stopped responding requiring the client interface to be restarted.

Upgrading/Ordering New Software

Entré Security & Access Management Software Version 7.9.3 D4 (9/9/14) will be automatically provided to dealers who have previously purchased an Entre license and are current with their Entre support agreement.

TU-0760 © 2014 Digital Monitoring Products, Inc.

	800-641-4282	INTRUSION • FIRE • ACCESS • NETWORKS
	www.dmp.com	2500 North Partnership Boulevard
	Designed, Engineered and Assembled in the USA	Springfield, Missouri 65803-8877