

Remote Link

January 2016

Version 1.77 Firmware Update

Effective January 14, 2016, all Remote Link and System Link software is being manufactured as Version 1.77 (1/13/16). If your current Remote Link or System Link software is previous to Version 1.46, update to Version 1.59 before updating to 1.77 (1/13/16).

Features

96 Doors of Access Control

Remote Link Version 1.77 (1/13/16) now supports the programming of XR550 operating with Version 111 (1/11/16) firmware. Please see TU-0824 for complete XR550 Version 111 update information.

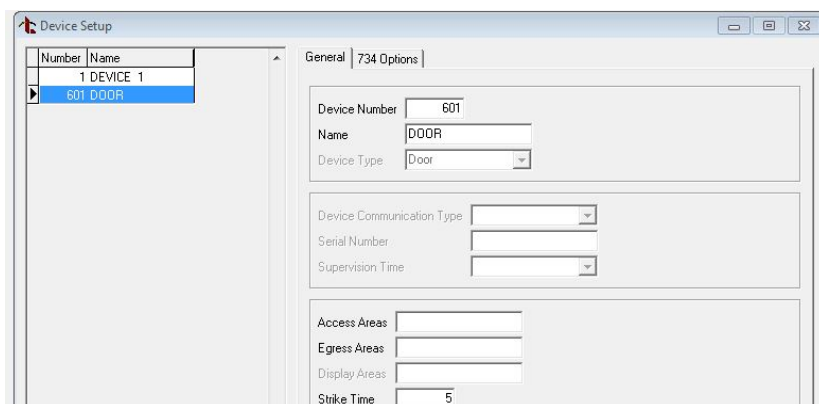
XR550 Version 111 (1/11/16) firmware now includes 32 doors of access control for the XR550. At no extra charge, this firmware update provides the ability to program an additional 16 doors of access to the system using 734 Wiegand Interface Modules connected to any of the XR550's LX-Bus headers. Combined with the 16 doors of access available from the keypad bus now totals 32 doors.

Door capacity can be increased to a maximum of 64 or 96 by applying purchased feature keys. Feature keys are purchased through DMP Customer Service and entered into the panel using a keypad or Remote Link. Call DMP Customer Service at 1-866-266-2826 for purchasing information. See section Feature Upgrade in the XR550 Programming Guide (LT-1232) and 96 Door XR550 Feature Key Upgrade below for more information.

Programming and Operation

XR550 Version 111 (1/11/16) now allows an LX-Bus address (e.g. 501) to be entered in the Device Setup window to program a 734 attached to the bus. Once a 734 address has been programmed for the bus, the LX-Bus is automatically converted from a hardwire zone expansion bus to a hardwire Access Expansion Bus (AX-Bus) and the bus begins to operate as shown below.

- Each 734 module provides one door relay and four protection zones to connect switches such as door and window contacts.
- 16 doors of access can be programmed per AX-Bus to a maximum of eighty (80) 734 modules. Please see the Remote Link Help File for available addresses.
- Any unused AX-Bus zone numbers (00 - 99) may be programmed as wireless zones. Hardwired zone expansion modules such as the 711, 714, 715-16 and others are incompatible with bus operation and cannot be used.
- Device Setup programming for AX-Bus address are automatically programmed as a door type. Device Type, Communication Type and Display Areas are not available. Only 734 module programming is shown.
- An AX-Bus operation is only compatible with 734 modules and the Model XR550. Keypads, 734N and 734N-Wifi modules must only be use on the keypad bus. AX-Bus operation is incompatible with the Model XR150 and XR350 control panels.



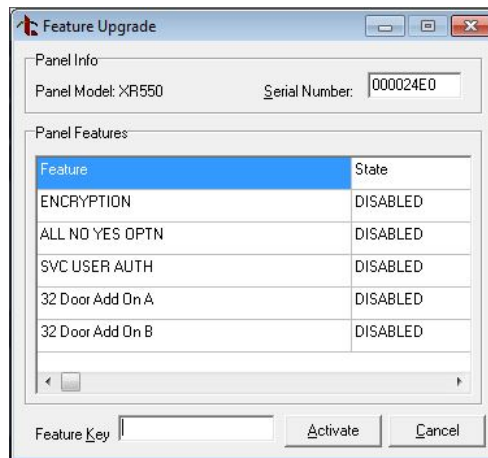
96 Door XR550 Feature Key Upgrade

Two upgrade feature keys are now available to upgrade the number of available access doors for the Model XR550 control panels operating with Version 111 or higher firmware. Please see TU-0824 for XR550 Version 111 update information.

Each 32 Door Add On Feature Key A and B provide an additional 32 doors of access. Both Feature Keys may be used together to total 96 doors of access.

For Example:

- An XR550 without a Feature Key add-on is 32 doors.
- An XR550 with Feature Key 32 Door Add-On A is 64 doors.
- An XR550 with Feature Key 32 Door Add-On B is 64 doors.
- An XR550 with Feature Key 32 Door Add-On A and B is 96 doors.



Obtaining the New Software

Remote Link and System Link Version 1.77 (1/13/16) updates are available for download free of charge on the DMP Dealer Direct Website at <http://dmp.com/dealer>.