

FEATURE UPDATE | SEPTEMBER 2019

Version 8.4.0 (9/27/19) Update

Effective September 30th, 2019, all Entré Security & Access Management software will be manufactured with updated Version 8.4.0 (9/27/19) software.

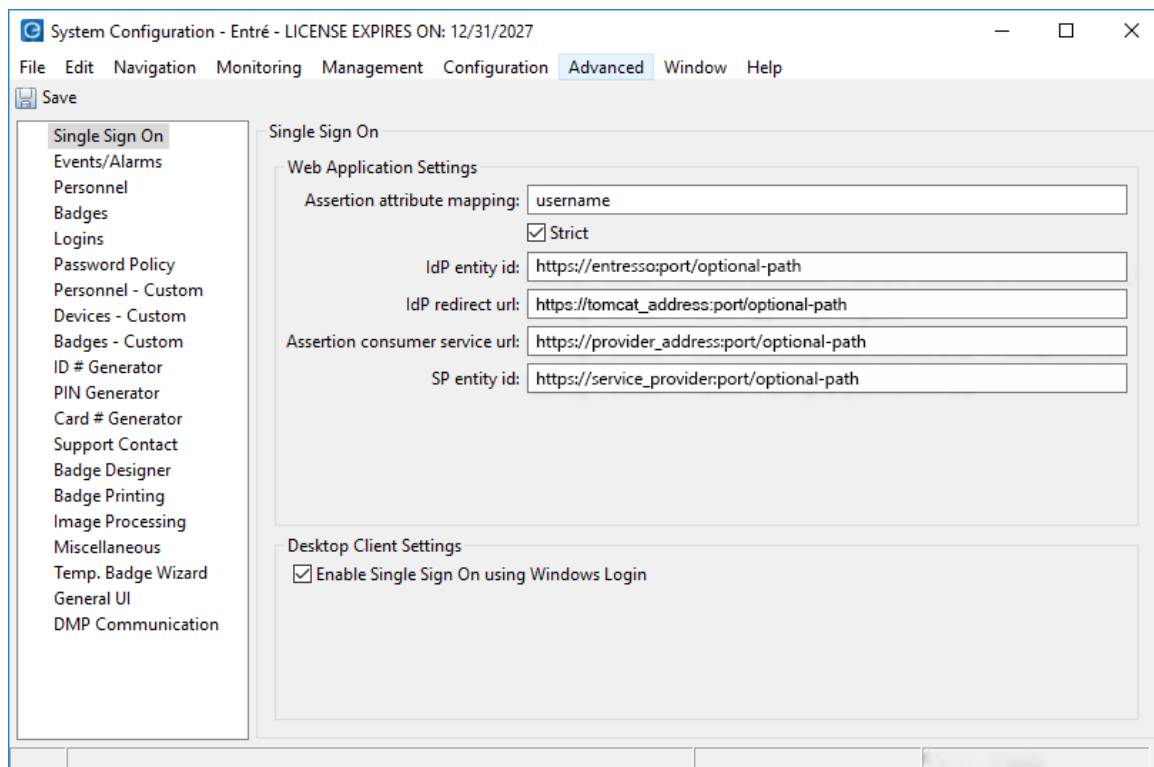
Features

Single Sign-On (SSO)

Entré now supports using SSO to authenticate users for Entré and panel access.

The Entré web client allows you to use a service provider, such as Ping Identity, to authenticate a user. When a user attempts to sign in, the service provider verifies the login information from the Tomcat server and assigns a certificate that grants access to the web client.

The Entré full client allows you to assign a Windows user to an operator. When a user signs in to Windows, their login is checked against information in the Entré database. If the user exists in Entré, they are authenticated and automatically signed in when the program is opened.



- **IdP Entity id:** The Entré SSO Service Entity ID (URI)
- **IdP redirect url:** The web client Apache Tomcat server address and port number
- **Assertion consumer service url:** The service provider's authentication server address and port number
- **SP entity id:** The service provider's connection ID (URI)

Fully Delete Data

Entré now enables you to fully delete unused panels and related data. This feature drastically reduces the amount of storage taken up by unnecessary data in the Entré SQL database. Deleting unused data also significantly improves the overall performance of Entré, especially during automation operations like copy and prune.

When you attempt a record deletion, Entré does not allow the deletion of dependent records to maintain data integrity.

Holiday Defaults

Note: This feature is only available for panels that are added in Entré after upgrading to Version 8.4.0.

Holidays created in panel programming now default to the following pre-selected holiday categories in Entré:

- A—National
- B—Company
- C—Religious

Holiday categories can be modified in the **Calendars** module.

Improvements

More Secure Operator Password Hashing

Operator passwords are now hashed more securely within Entré. All new users and users who change their passwords can take advantage of this improved functionality.

Improved Search: Hardware List and Hardware Tree

Improvements to search in the **Hardware List** and **Hardware Tree** modules enable you to search by panel account number. This feature also improves the performance of both modules because all systems are not loaded automatically. Instead, results are populated according to the search terms entered.

Improved Performance

Changes have been made to improve performance of Entré and create a better user experience. This may result in a slightly longer upgrade time, especially for users with older versions of Entré.

Obtaining the New Software

Entré Security & Access Management software Version 8.4.0 (9/27/19) is provided to dealers who have previously purchased an Entré license, are current with their Entré support agreement, and who have an Entré Certified Technician.

To upgrade to Entré Version 8.4.0 (9/27/19) please complete the [Pre-Upgrade Checklist \(LT-1782\)](#) before contacting DMP Technical Support at 888.436.7832.

Additional Entré information and documentation are located at DMP.com/Entré.