

SCS-VR

December 2015

Version 1.4.0 Software Update

SCS-VR is now being manufactured as Version 1.4.0 (12/14/15) and contains the following update.

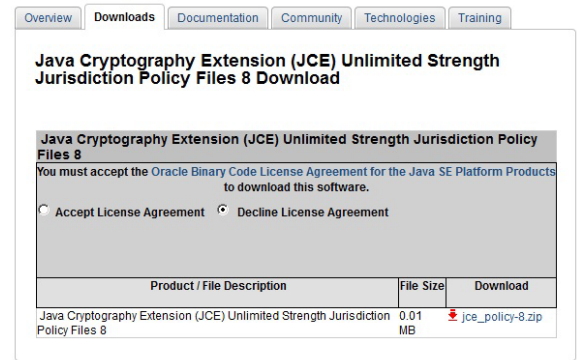
Features

256-bit Encryption

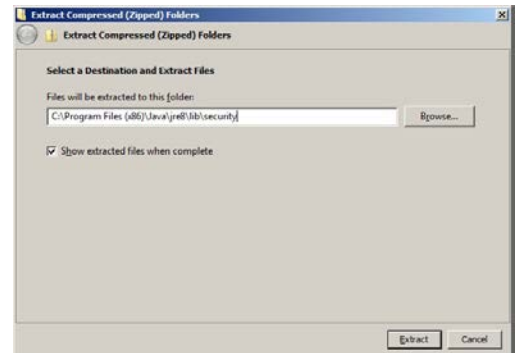
SCS-VR now supports 256-bit AES encryption. Before SCS-VR can accept 256-bit encrypted messages for panels, the following steps must be performed to properly configure Java on the SCS-VR computer.

- 1) Download the Java Cryptography Extension (JCE) Unlimited Strength Jurisdiction Policy Files compatible with your version of Java.

- a. The files for JRE8 can be found at <http://www.oracle.com/technetwork/java/javase/downloads/jce8-download-2133166.html>
- b. Before downloading the files, agree to the Oracle Binary Code License Agreement for the Java SE Platform Products, which covers exporting any product that supports greater than 128-bit encryption.



- 2) Extract the policy files to the appropriate folder in the Java directory. Typically this is located at: Program Filesx86/Java/jre8/lib/security.

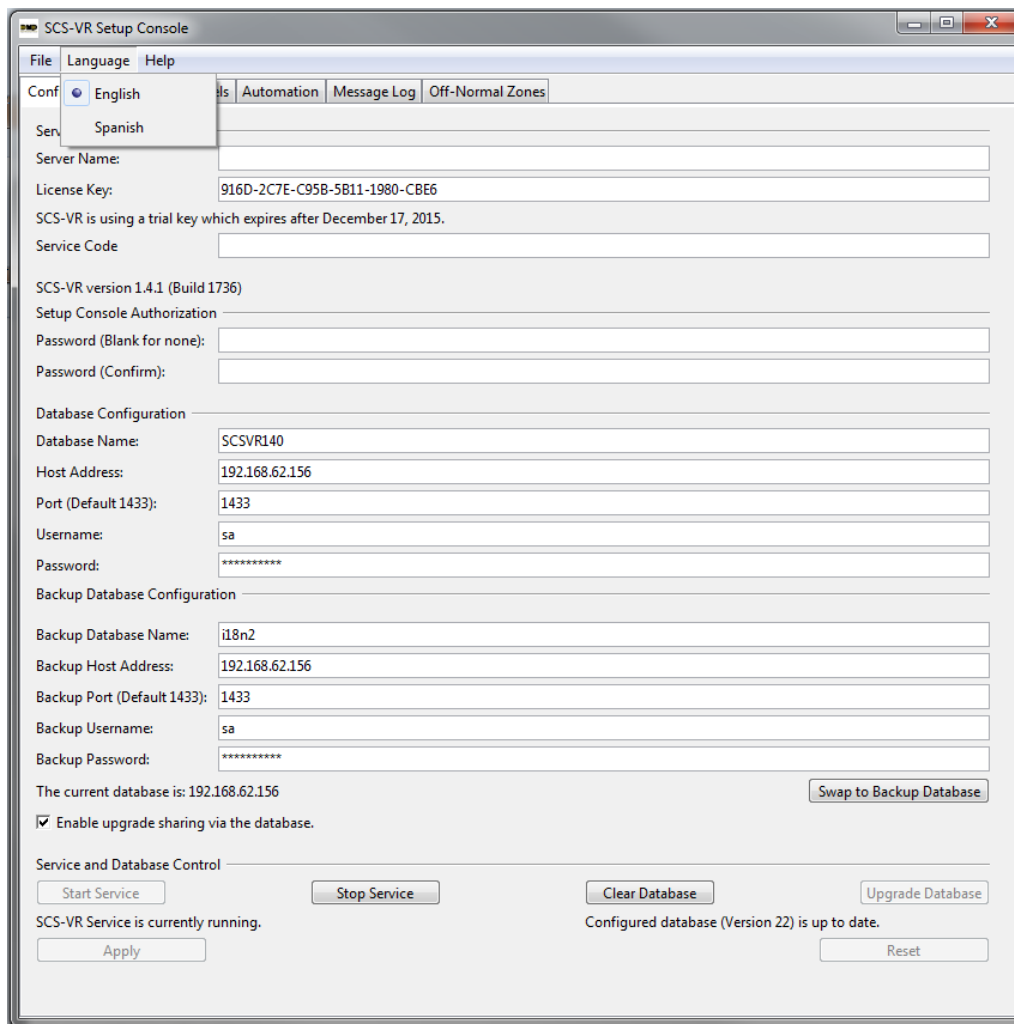


- 3) Update SCS-VR using the SCS-VR installer.



Language Menu

SCS-VR now supports multiple languages. Click on Language from the menu bar. Language options of English and Spanish are displayed. All menus will be displayed in the language option chosen.



Updated Operation

Time Change

When the time zone setting of the SCS-VR or SQL database computer was changed, a System Message 16 Panel Not Responding may have been incorrectly logged for some panels.

XT Series Network Communication

Opening and Closing Messages

Previously, when an XT Series Control Panel sent multiple opening or closing messages, SCS-VR would only accept one message per TCP connection. SCS-VR now accepts multiple messages in a single TCP connection.

Receiver IP 1 and 2

When an XT Series Panel was programmed with two separate SCS-VR receivers as the first and second IP addresses of Receiver 1, SCS-VR would incorrectly close connections rather than waiting for the panel to close the connection. This caused the panel to unnecessarily switch between the first and second IP addresses.