

Remote Link and System Link

August 2009

Version 1.50 Software Update

Effective August 2009, Remote Link and System Link are being shipped as Version 1.50 (8/24/09) software. This version is an update from the Version 1.49 (7/1/09) software previously shipped and contains the following new features:

- Account Archive Operation
- Panel Send Local Changes
- Retrieving Changes Only

Remote Link and System Link updates are available for download free of charge on the DMP Dealer Direct Website at <http://dmp.com/dealer>.

Features

Account Archive Operation

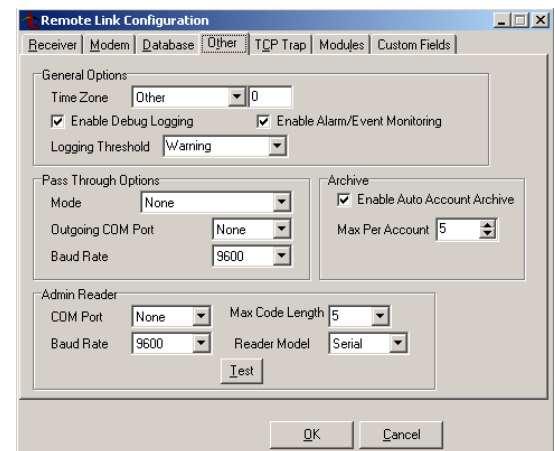
The following new programming options have been added to allow panel account programming to be archived. The Account Archive feature allows panel account programming to be stored for comparison or the archived version may be used to revert current panel programming to an archived version.

Archive

Enable Auto Account Archive: Select this option to allow panel account programming to be automatically archived (saved separately) when connecting to a panel with programming different than the programming currently on file. Default is unchecked.

To archive panel account programming manually, select File>Panel Information.

Max Per Account: Select the maximum number of panel programming archive versions allowed to be stored per account. Allowed range is 1 to 20 archives. Default is 5.



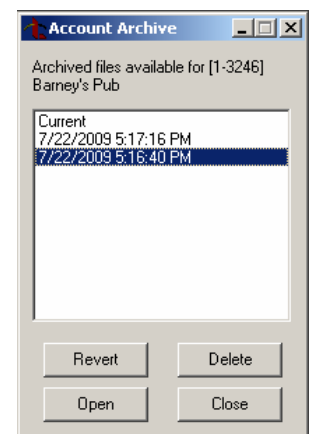
Managing Account Archive

Account Archive can be accessed by selecting **Panel>Account Archive**. The Account Archive feature allows panel account programming to be stored for comparison or the archived version may be used to revert current panel programming to an archived version. Remote Link can be programmed to store up to 20 archived programming records per account. To program the number of account archive versions stored per account, select **System>Configure>Remote Link>Other Tab**.

Revert: This option reverts the current panel account programming to a previous programming version. Select the archive version and click Revert. Remote Link automatically creates an archive version of the current programming before reverting to the selected panel programming. Once the panel account has been reverted, the programming is stored as the Current version and CAN be sent to the panel.

Open: This option opens the account archive version for viewing purposes. This is a read only option.

Delete: This option permanently removes the selected account archive version.



Account Archive

Account Archive allows panel account programming to be automatically or manually archived for comparison or the archived version may be used to revert current panel programming to an archived version. Remote Link can be programmed to allow up to 20 archived programming records per account. To program the maximum number of account archives allowed, select

System>Configure>Remote Link>Other Tab.

To manually archive the current panel account information and programming, click on the **Archive** button on the **Panel Information** window. The panel account programming is stored with the current date and time.

To enable Remote Link to archive panel account programming automatically, select

System>Configure>Remote Link>Other Tab.

The screenshot shows the 'Panel Information' window with a list of accounts. A 'Remote Link' dialog box is open, displaying the message: 'Harper Grocery archived at 7/23/2009 12:02:07 PM.' with an 'OK' button.

Name	City	Receiver	Account	Model	Version
Acme Metal		1	555	XR500N	203
Barney's Pub		1	3246	XR500N	204
Carsons Place		1	3719	XT30	102
Cinema 8		1	6314	XR500	203
Harper Grocery		1	3113	XR500N	108
Heartland Heating		1	4664	XR40	300
Home Town Bank		1	459	XR500N	202
Joe's Bait Shop					
Midcom Bank					
Scotts Farm	Toledo				
Smith Plumbing					
Smith Residence					
Tilly's Dress Shop					
Valerie's Hardware S		1	44444	XR200	112
Weatherford Auto		1	497	XR100N	203
Widget Specialty Stc		1	22222	XR5	104
Wilson Residence		1	36546	XT50	102

Buttons at the bottom of the Panel Information window: New, Copy, Delete, Archive.

Buttons at the bottom of the Remote Link dialog box: OK.

Buttons at the bottom of the Panel Information window: System Info, OK, Cancel.

Compare Accounts Report

This option allows comparison of a variety of panels to each other, to an archived version and/or to a template. The comparison report is generated in .xml spreadsheet format. Access this option in **File > Print > Compare Accounts**.

Control Panel

☐ Template
 ☒ Account
 Panel Model:
 Version:

- Load

☐ Show Like Models Only
 ☐ Show Like Versions Only

☐ Show Archive

Select Accounts To Compare

Receiver	Account	Name
1	459	Home Town Bank
1	497	Weatherford Auto
1	555	Acme Metal
1	3113	Harper Grocery
1	3246	Barney's Pub
1	3333	Tilly's Dress Shop
1	3719	Carsons Place
1	4664	Heartland Heating

Options

☐ Sort by Account
 ☐ Include Users

☐ Include Text Names
 ☐ Include Schedules

☐ Include Profiles

Accounts To Compare

Receiver	Account	Name
----------	---------	------

Show Archive: This option displays for Account comparisons. If selected, archived panel programming versions are displayed under Select Accounts To Compare.

Control Panel

☐ Template
 ☒ Account
 Panel Model: XR500
 Version: 203

1 - 6314 Load

☐ Show Like Models Only
 ☐ Show Like Versions Only

☒ Show Archive

Select Accounts To Compare

Receiver	Account	Name
1	459	Home Town Bank
1	3333	Tilly's Dress Shop
1	3719	Carsons Place
1	4664	Heartland Heating
1	6314	Cinema 8
1	6478	Smith Plumbing
1	11111	Smith Residence
1	12345	Scotts Farm
1	16149	Joe's Bait Shop
1	22222	Widget Specialty Store
1	36546	Wilson Residence
1	44444	Valerie's Hardware Store
1	55555	Midcom Bank
1	3113	Harper Grocery

Options

☒ Sort by Account
 ☒ Include Users

☐ Include Text Names
 ☐ Include Schedules

☐ Include Profiles

Accounts To Compare

Receiver	Account	Name
1	497	Weatherford Auto
1	555	Acme Metal
1	3246	Barney's Pub

Save To: C:\Documents and Settings\Desktop\Comparison.xml

Compare Cancel

Send Local Changes

The following options have been added to allow the panel to send all local programming changes to a remote programming computer.

Send Local Changes (XR100/XR500 Series Version 204 or higher): This option allows the panel to automatically update a remote programming computer at the central station with any changes made to the panel.

Select NET or DD to send local programming changes or User Menu changes to user codes, user profiles, schedules, or holiday dates to Remote Link after exiting the programming or User Menu. If NET is selected, changes are sent using Network. If DD is selected, changes are sent using Dialer. Select None to disable this feature. Default is None.

Remote Change IP (XR100/XR500 Series Version 204 or higher): This option displays when NET is selected for Send Local Changes.

Enter the IP address containing up to 16 characters. The Net IP Address must be unique and cannot be duplicated on the network. Enter all 12 digits and leave out the periods. For example, enter IP address 192.168.0.250 as 192168000250. The periods display automatically. Default is 000.000.000.000.

Remote Change Port (XR100/XR500 Series Version 204 or higher): This option displays when NET is selected for Send Local Changes. Enter the Port number. Valid numbers are from 0 to 65535. Default is 2002.

Remote Phone Number (XR100/XR500 Series Version 204 or higher): This option displays when DD is selected for Send Local Changes. Enter the phone number the panel dials when sending programming changes. After entering a phone number, the panel sends any panel changes to the Remote Link programming computer.

The phone number can have two lines of 16 characters each to equal 32. Enter a P to program a two second pause in the dialing sequence. The P character counts as part of the 32 allowable characters. Enter *70P as the string first characters to cancel call waiting. No dial tone detect "D" is required. Dial tone detect is an automatic panel function.

Retrieving

The following option allows Remote Link to retrieve only the programming changes that occurred since the last time the panel was connected.

For XR100 and XR500 panels Version 204 or higher, select Changes Only to retrieve only the programming that has changed since the last connection with the panel.

Obtaining the New Software

Remote Link and System Link updates are available for download free of charge on the DMP Dealer Direct Website at <http://dmp.com/dealer>.

TU-0527 © 2009 Digital Monitoring Products, Inc.

	800-641-4282	INTRUSION • FIRE • ACCESS • NETWORKS
	www.dmp.com	2500 N. Partnership Boulevard
	Made in the USA	Springfield, Missouri 65803-8877