

Remote Link and System Link

May 2009

Version 1.48 Software Update

Effective May 2009, Remote Link and System Link are being shipped as Version 1.48 (5/7/09) software. This version is an update from the Version 1.47 (4/9/09) software previously shipped and contains new features.

Remote Link and System Link updates are available for download free of charge on the DMP Dealer Direct Website at <http://dmp.com/dealer>.

Features

SecureCom Wireless Activations

The SecureCom Wireless Activations window can now be accessed by selecting **System>SecureCom Wireless Activations**. In the SecureCom Wireless Activations window, select the SIM (Subscriber Identity Module) card to change and select the Change SIM button to open the SecureCom Wireless window or select New to open up the Activate SIM window to add a SIM card.

The SecureCom Wireless window allows changes, activation, and deactivation of the selected SIM card. Remote Link automatically populates the Rate Plan field with a suggested rate plan that most closely matches the communication path programming for the panel.

The Activate SIM window can also be accessed by selecting **Program>Communication**. Select the path programmed for Cell communication and click on the Activate Button.

When the Activate SIM screen appears, enter all of the information before clicking on Activate.

The following list explains the fields that appear on this screen:

NOTE: Complete all panel programming before activating the cellular path to ensure the correct rate plan is calculated for usage.

SIM Type: Select the type of SIM card you are activating. Select either 200 (White SIM card) or 400 (Yellow SIM card).

SIM Card#: Enter the SIM number from the SecureCom Wireless SIM card.

Panel Name	Account	SIM	Phone Number	Rate Plan	Status
Home Town Bank	1-1458	16789012345678901234		406	Unused
Safety Town Bank	1-2365	123456789012345A		203	Unused

Buttons: New, Delete, Edit, Close

Account: 1 - 1458 Home Town Bank

Status: Unused [Activate]

SIM Type: ☐ 200 (White) ☒ 400 (Yellow)

SIM: 1678 9012 3456 7890 1234

Phone Number:

Rate Plan: 406: Back-up or primary path with a daily test.

Panel programming suggests rate plan: 406: Back-up or primary path with a daily test.

Buttons: OK, Cancel

Rate plan changes will be automatically sent to SecureCom Wireless, LLC.

Account: 1 - 1458 Home Town Bank

SIM Type: ☐ 200 (White) ☒ 400 (Yellow)

SIM:

Rate Plan: 406: Back-up or primary path with a daily test.

Buttons: Activate, Cancel

Rate plan changes will be automatically sent to SecureCom Wireless, LLC.

Rate Plan: For XR100, XR500 Series, and XT Series panels, Remote Link automatically populates this field with a suggested rate plan that most closely matches the communication path programming for the panel. If you choose to override the suggested rate plan, you could experience overage fees from SecureCom Wireless, LLC.

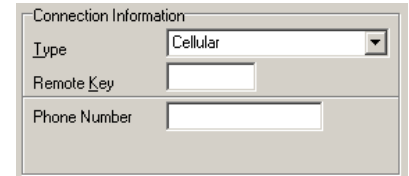
XT30/XT50 Series Panels Version 102 or higher

Remote Link now supports the XT Series panels using Version 102 or higher software. Following are the available features.

Remote Programming via CELL

The XT Series Control Panels can now be programmed remotely using cellular communication in the same manner as digital dialer or network communication.

Phone Number: Enter the Phone Number received when the SIM card was activated.



Connection Information

Type	Cellular
Remote Key	
Phone Number	

Messaging Setup

Remote Link now supports the XT Series Version 102 operation to send cellular text commands to the panel .

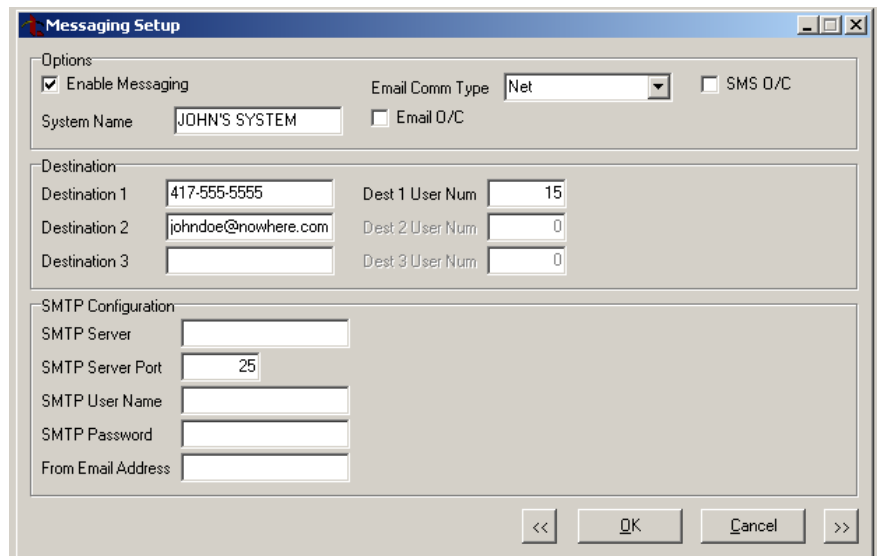
The **Messaging Setup** window allows you to enter the information needed to send messages from the panel to a given destination via email and SMS text using Network or Cellular communication. SMS text can also be used to send cellular text commands to the panel, such as arming and disarming. All of the name and password options below allow up to 32 lowercase characters to be entered. The Destination addresses allow up to 48 characters to be entered.

Destination

A new option has been added to Messaging Setup programming to allow a user number to be entered to support remote SMS Text Commands.

Destination 1-3: Enter the destination email address or cell phone number where messages will be sent. The message can be sent to any device (computer, cell phone, PDA) as long as a valid email address or 10-digit cell phone number is entered.

Note: Mail servers that require encryption are not supported by the XT30, XT50, XR100 or XR500 series panels.



Messaging Setup

Options

☒ Enable Messaging Email Comm Type: Net ☐ SMS O/C

System Name: JOHN'S SYSTEM ☐ Email O/C

Destination

Destination 1	417-555-5555	Dest 1 User Num	15
Destination 2	john.doe@nowhere.com	Dest 2 User Num	0
Destination 3		Dest 3 User Num	0

SMTP Configuration

SMTP Server	
SMTP Server Port	25
SMTP User Name	
SMTP Password	
From Email Address	

<< OK Cancel >>

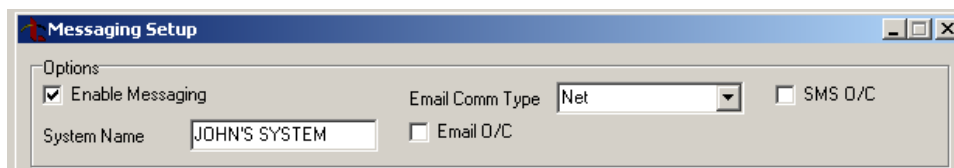
Dest User Num (XT Series Version 102 or higher): If Destination 1, 2, or 3 is a 10-digit cellular number, you may enter a user number from this account. This option is used when sending commands such as arming or disarming back to the panel using SMS text from the same cell phone or PDA. The user number must have the authority to perform the commands as if it occurred at the keypad. SMS Text panel command operation is available in XT30/XT50 Series panels using version 102 or higher. Entering 0 (zero) disables this option. Default is 0.

Message Destination Address Expanded to 48 Characters

The three Destination address programming options in Messaging Setup now allow 48 characters to be entered. The expanded length accommodates longer email address or cell phone text message addresses.

Opening/Closing Messages

Remote Link now supports the XT Series Version 102 operation to allow Opening and Closing messages to be sent over a Cellular path.

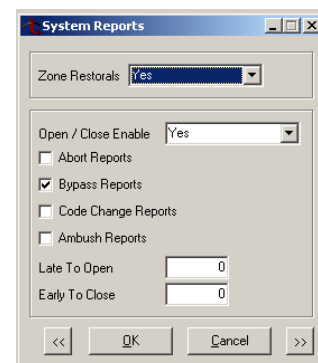


Late to Open/Early to Close

New options have been added to System Reports for the XT Series panels to allow programming for the Late to Open and Early to Close operation.

Late To Open (XT30/XT50 only): Enter 1-240 as the number of minutes to elapse that the system may remain armed after the opening time of a schedule without sending a Late To Open message. If the system continues to be armed after the Late to Open minutes expire, a Late To Open message is sent to the central station. Default is 0, which disables the Late To Open option.

Early To Close (XT30/XT50 only): Enter 1-240 as the number of minutes that the system can be armed prior to the scheduled closing time. If the system is armed prior to the Early to Close minutes, an Early To Close message is sent to the central station. Default is 0, which disables the Early To Close option.



Additional Areas 5 and 6

When Area system operation is used with the XT Series panels, the available areas have been increased from 4 to 6. New areas 5 and 6 are programmed and used in the same manner as areas 1 - 4.

Additional Keypad Addresses 6, 7 and 8

Keypad addresses 6, 7 and 8 are now operational with the XT Series panels to support DMP LCD keypads or other deypad bus devices.

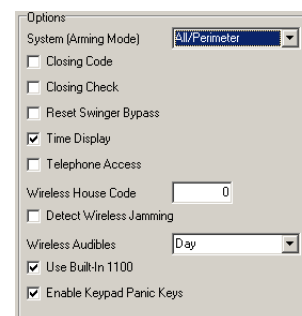
Additional Zones

Zones 61-64, 71-74 and 81-84 have been added in XT Series Zone Information programming. The new zones can be used via keypad addresses 6, 7 and 8 or as wireless zones. The additional zones increase the capacity for the XT30 panel to 42 zones, 10 onboard and 32 via the eight keypad addresses. The capacity of the XT50 has been increased to 58 zones, 10 onboard and 48 via the eight keypad addresses and built-in wireless receiver.

XT50 Wireless Receiver

A new option has been added to System Options that allows the XT50 Series Control Panel to use an 1100 Series Wireless Receiver located on the keypad bus in the same manner as the XT30. This allows wireless zones to operate either via the keypad bus or from the built-in receiver on the panel. Only one receiver can operate per system; they cannot be combined.

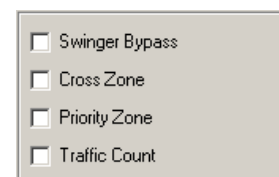
Use Built-In 1100: Select this option if using the built-in wireless on the XT50. If selected, zones 80-99 are available to be programmed as wireless zones. If this option is not checked, keypad address 8 is useable as zones 81-84 and zones 80 and 85-99 are not available. Default is enabled.



Traffic Count

A new option has been added to Zone Information to count the number of zone trips during a disarmed period.

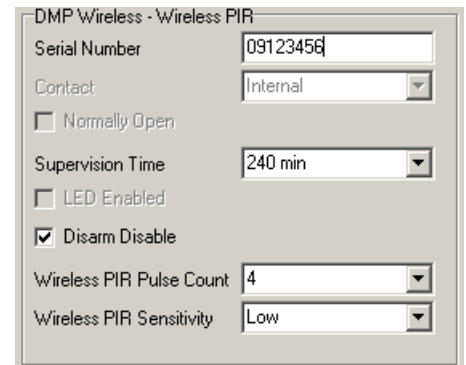
Traffic Count: If selected, provides reporting to the receiver of the number of zone trips per area for Night and Exit type zones while in a disarmed state. Default is NO.



1126 Wireless PIR Support

The 1126 Series PIR can now be used with the XT Series Control Panels. The following panel programming options of this update have been added to support the 1126 Series Wireless PIRs:

- Disarm/Disable
- Wireless PIR Pulse Count
- Wireless PIR Sensitivity



DMP Wireless - Wireless PIR

Serial Number: 09123456

Contact: Internal

☐ Normally Open

Supervision Time: 240 min

☐ LED Enabled

☒ Disarm Disable

Wireless PIR Pulse Count: 4

Wireless PIR Sensitivity: Low

Communication Backup Path for CELL

If CELL is selected as the primary communication path type, NET and 232 are allowed as the only backup communication options. Previously, DD and CID were allowed to be selected.

Obtaining the New Software

Remote Link and System Link Version 1.48 (5/7/09) updates are available for download free of charge on the DMP Dealer Direct Website at <http://dmp.com/dealer>.