

Remote Link and System Link Software Update

August 2005

Version 1.25 Software Update

Effective August 2005, all Remote Link and System Link are being shipped as Version 1.25 (8/16/05) software. This version is an update from the Version 1.24 (7/5/05) software previously shipped and contains updated operation.

Remote Link and System Link Updates version 1.25 (8/16/05) are available for download free of charge on the DMP Dealer Direct Website at <http://dmp.com/dealer>. Hard copy updates on CD can be obtained for a charge by calling DMP Customer Service at 1-800-641-4282 and ordering the Link Update.

Updated Operation

Five Digit User Codes

Remote Link now properly accepts 5 and 6 digit user codes from cards presented to the Admin Reader.

Previously, when adding a 5-digit user code through the Admin Reader, Remote Link inserted a "1" in front of the code and created a 6-digit code.

Four Digit User Codes

Remote Link now properly adds user codes through the Admin Reader for panels that only use four digit user codes, such as the XR20.

Previously, Remote Link displayed an incorrect user code for four digit codes entered through the Admin Reader.

User Codes

Remote Link now retrieves and saves leading zeros in a user code for the XR6, XRSuper6, XR5, XR10, XR20 and XR40 panels.

Previously, when adding 4-digit user codes with leading zero's (Example: 0123) to an XR20 panel using Remote Link, the code would be accepted by the panel but when the panel programming was later retrieved, the leading zero's were truncated and not displayed in Remote Link.

Arm First

The Arm First option in Area Information is now unchecked by default.

Previously, on the first Remote Link connect to an XR500 Series panel after the "Arm First" area feature was enabled, Area Information programming displayed "Arm First" checked and partially greyed out.

Operator Password

When entering a new Remote Link operator, Remote Link now displays the operator password as asterisks when entered in the password validation field.

Previously, the characters of the operator password would be displayed in clear text instead of asterisks, and a separate pop-up window was used for validation.

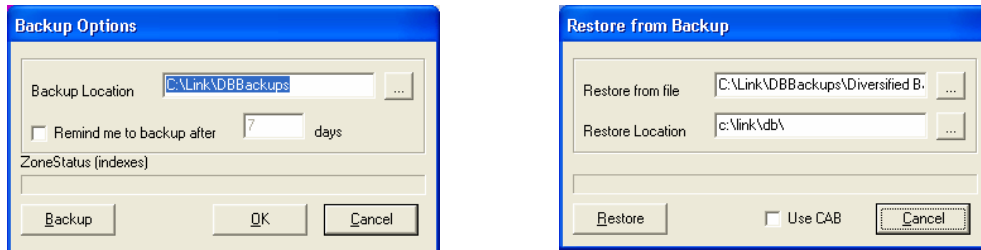


Corrupted Database Backup

Remote Link now appropriately displays an error message when a database backup is attempted using a corrupted database.

Remote Link now also allows the restoral of a database from a previous version of Remote Link. Check the "Use CAB" option before selecting the backup file.

Previously, the database backup was reported as successful, but the CAB file containing the backup was missing from the backup location.



Prewarn Option

Remote Link now does not display an Exit Zone Prewarn as a programmable option for Fire or Supervisory type zones.

Previously, when programming a Fire or Supervisory type zone for an XR40, 1912XR, XR200 (Version 111 and below) and XR200/485 (Version 205 and below) panel in Remote Link, Prewarn displayed as a programmable option.

2ND Line Communication

Remote Link now appropriately does not allow NET to be selectable for 2nd Line Communication programming when the panels main communication type is NET.

Previously, when the main communication type of any panel was programmed for Net, Remote Link allowed Net as the 2nd Line even though it had been greyed out. When this occurred, the Receiver 2 tab and its programming options unnecessarily appeared.

Early Morning Ambush

Remote Link now allows Early Morning Ambush to only be programmable on an XR200-485B version panel.

Previously, after creating a new XR200-485 panel in Remote Link, the programming option "Early Morning Ambush" displayed in Area Information> Partition Information.

Bank Safe and Vault Features

Remote Link now appropriately only allows the Bank Safe and Vault features to be selectable on an XR500N.

Previously, when viewing programming for an XR500 (Not XR500N) in Remote Link, Bank Safe & Vault, Two-Man Rule and Early Morning Ambush were selectable in Area Information.

Entry Delay

Remote Link now only allows an Entry Delay of 1 or 2 in the Entry Delay Number Field for an XRSuper6, XR20 and XR40 panel.

Previously, when programming an Exit Zone for an XRSuper6, XR20 or XR40 panel in Remote Link, an Entry Delay of 3 or 4 could be entered in the Entry Delay Number Field.

Retard and Fast Response

Remote Link now appropriately does not allow the Retard and Fast Response programming fields to be selectable for Fire Verify and Arming Zones.

Previously, when programming a Fire Verify and Arming Zone with Remote Link, the Retard and Fast Response programming fields were selectable.

Programming Printing

Remote Link now prints all panel programming.

Previously, when printing panel programming in Remote Link, some Access Areas under Device Setup were not displayed. The total number of characters for the field appeared to exceed the print limit.

Programming Fields

XR500 programming fields that do not exist in one version are now properly updated when panel programming is retrieved.

Previously, When an XR500 panel with a newer version than what was in the database was retrieved, some of the programming fields that did not exist in the older version were not properly updated. Instead, the default values were saved.

Obtaining the New Software

Remote Link and System Link Updates version 1.25 (8/16/05) are available for download free of charge on the DMP Dealer Direct Website at <http://dmp.com/dealer>. Hard copy updates on CD can be obtained for a charge by calling DMP Customer Service at 1-800-641-4282 and ordering the Link Update.