

Remote Link & System Link Version 1.24 Feature Update July 2005

Version 1.24 Software Update

Effective July 2005, all Remote Link and System Link software is being shipped from the factory as Version 1.24 (7/5/05) software. This version is an update from the Version 1.23 (3/30/05) software previously shipped and contains new features.

Features

Account Groups

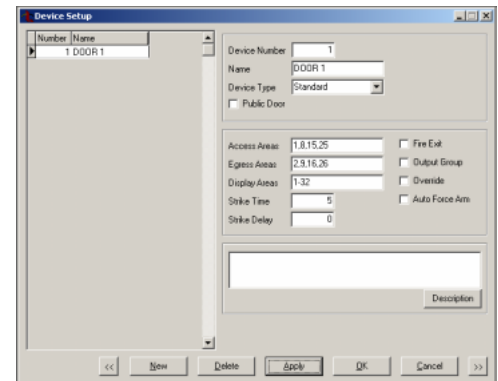
System Link now supports operation with the Account Groups Module. The easy-to-use module is an add-on to DMP's Remote Link and System Link programs and can be purchased by calling DMP Customer Service at 1-800-641-4282. The Account Groups Module enables users to send user code changes to multiple XR500 Series panels using a batch operation rather than accessing each panel individually to make changes.



Auto Force Arm

Remote Link now supports the XR500 Series panel Version 110 option to allow automatic arming of all areas assigned to a device.

Auto Force Arm (XR500 Series/XR2500F): Enable to have all Display Areas assigned to this keypad automatically arm and to force arm faulted zones at arming. If Closing Code is programmed as YES, only the matching areas between the Display Areas and the User Code's authorized areas arm. Also, when enabled, the user is not prompted to select areas to disarm after entering a code at Entry Delay or after choosing Disarm at the keypad. All matching areas assigned to the User Code and to this keypad are automatically disarmed. When not enabled, the user is prompted to select areas (ALL NO YES) and choose to force arm or bypass at arming and disarming. See the Device Setup section of the XR500 Series Programming Guide (LT-0679).



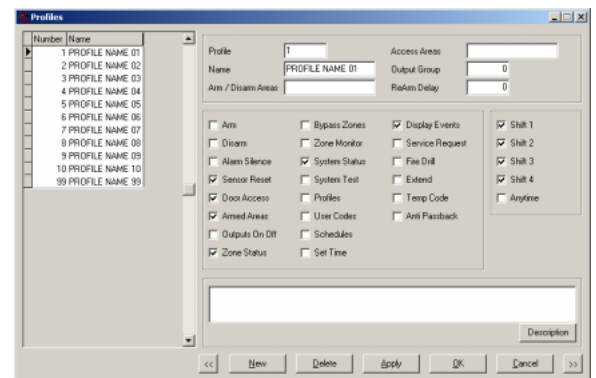
Arm/Disarm

Remote Link now supports the XR500 Series panel Version 110 option in Profiles to allow separate Arm and Disarm authority for a profile.

Arm / Disarm Areas: Enter the number for the areas that you want to authorize this profile to arm and disarm. Beginning with XR500 Series and XR2500F version 110, you can specify separate arm and disarm authority for a profile.

Each profile may be assigned specific areas of the burglary part of the system for arming and disarming. When profiles 1 to 98 are created, no areas are assigned by default. By default, profile 99 is assigned authority to all areas.

To enter an area number, click once in the field to select it and type the number key for the desired area. The number appears in the field. To remove an area, type the number for that area in the Arm / Disarm Areas field.



Bypass Limit

Remote Link now supports in System Options the XR500 Series panel Version 110 option to select the maximum number of zones that can be bypassed in any area when the area is armed.

Bypass Limit (XR500 Series/XR2500F): Enter the maximum number of zones (0 to 8) that can be bypassed in an area when that area is being armed. This limit is only in effect when arming from the keypad. Entering 0 (zero) disables this function allowing an unlimited number of zones to be bypassed. Default is 0.

Miscellaneous Options

Swinger Bypass Trips	3
Bypass Limit	0

Closing Wait

Remote Link now supports the Closing Wait Output option for iCOMSL Version 103 or higher.

Closing Wait Output: Enter the output number to turn on for approximately four (4) seconds when Closing Wait is programmed as YES and the iCOMSL successfully communicates the closing message at arming. If the closing message does not communicate successfully, this output does not turn on.

Output Options

Options:	Outputs:
Cutoff Time: 10	Communication Fail Output: 0
	Closing Wait Output: 0

Substitution Code

Remote Link now supports the Substitution Code option for iCOMSL Version 103 or higher.

Substitution Code Enable: Enable to have the iCOMSL send a substitution code when communicating with the receiver. The iCOMSL Substitution Code increases the level of security by helping to ensure the message being sent to the receiver has not been substituted.

Communications

Host Setup		Gateway	000.000.000.000
<input type="checkbox"/> DHCP Mode	Local IP	Retry Time	5
	Local Port	<input type="checkbox"/> Substitution Code Enable	
	Programming Port	Check-in Time	006
	Receiver IP	Fail Time	6
	Receiver Port		
	Subnet Mask		

Ordering the New Software

Remote Link and System Link Updates version 1.24 (7/5/05) are available for download free of charge on the DMP Dealer Direct Website at <http://dmp.com/dealer>. Hard copy updates on CD can be obtained by calling DMP Customer Service at 1-800-641-4282 and ordering the Link Update for a charge.