

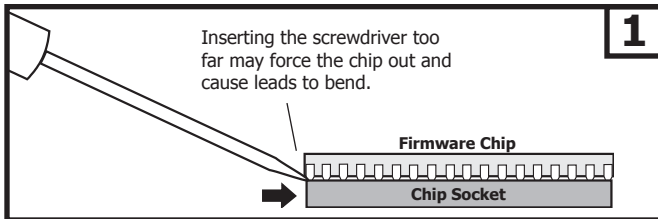
Wait! Before removing an old firmware chip...

Please read these instructions!

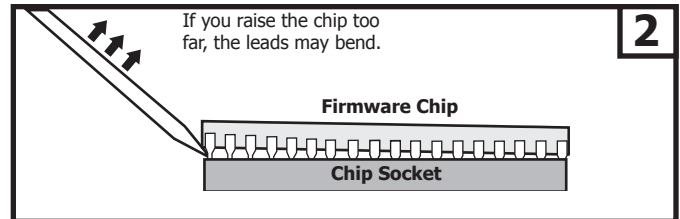


Ground Yourself Before Handling the Panel! Touch any grounded metal, such as the enclosure, before touching the panel to discharge static. **Remove All Power From the Panel!** Remove all AC and Battery power from the panel before installing or connecting any modules, cards, or wires to the panel.

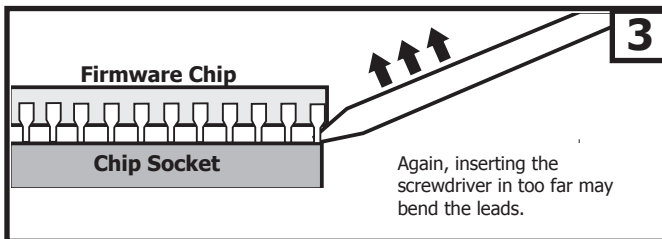
It is recommended that you use a chip remover to remove the chip. However, if you do not have access to one, a small flat-head screwdriver will work. Follow the instructions below to correctly remove the firmware chip from the chip socket with a screwdriver.



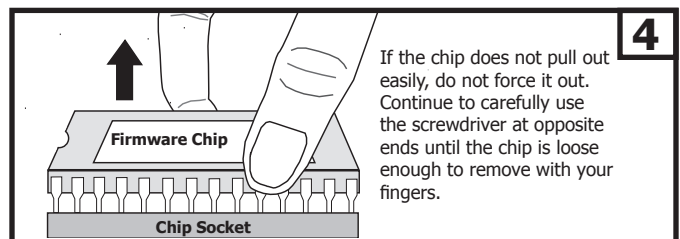
Insert screwdriver between the chip and the chip socket as shown. Start with the side closest to the panel terminals.



Lift screwdriver while the blade is inserted between the chip and chip socket. Gently push the chip up. Slightly raise the PROM as shown above.



Repeat steps 1 and 2 on the opposite side of the chip. Do not insert the screwdriver too far in between the chip and chip socket when pushing the chip out.



Repeat steps 2 and 3 until the chip is loose enough to easily pull out by hand. Pull with an upward motion to reduce the number of bent leads.

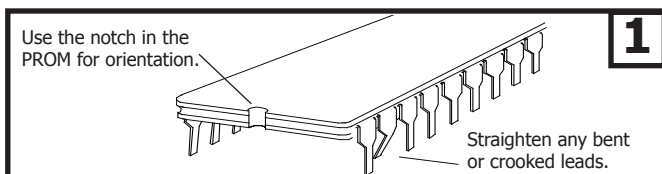
Install the PROM chip



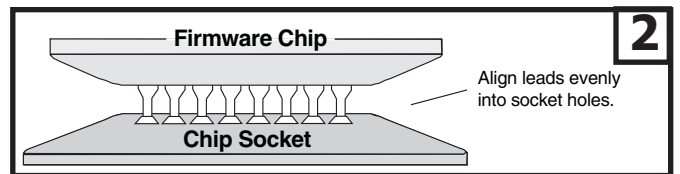
Ground Yourself Before Handling the Panel! Touch any grounded metal, such as the enclosure, before touching the panel to discharge static.

Remove All Power From the Panel! Remove all AC and Battery power from the panel before installing or connecting any modules, cards, or wires to the panel.

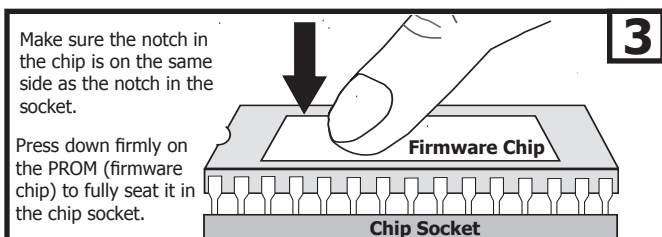
When installing a PROM it is important to verify that each of the leads seat properly into the PROM socket. This allows information to properly send and receive between the PROM and other components on the circuit board. If the PROM is not seated correctly, either not pushed all the way down or if one or more of the leads are bent, the product may not function or it may function at first but then experience failures later. Use the instructions below to correctly install the PROM.



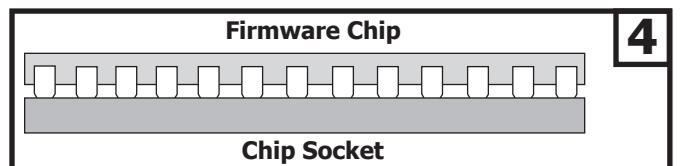
Inspect the PROM (firmware chip) for any bent or crooked leads and straighten gently by hand.



Insert the row of leads farthest from you into the socket holes. Make sure they are aligned.



Slowly lower the front row of leads into the socket aligning all leads with the socket holes. Press firmly on the PROM top (firmware chip) until it is fully seated.



Inspect the PROM to ensure there are no bent leads and the body is level indicating the PROM is fully seated.