

Entré Security & Access Management Software

November 2017

Version 7.9.8 Software Update

Effective November 30, 2017, all Entré Security & Access Management software is being manufactured as Version 7.9.8 (12/5/17). If your current Entré software is previous to Version 7.9.5, update to Version 7.9.5 before updating to Version 7.9.8 (12/5/17). Please see the Entré Server Architecture Recommendations (LT-1639) at dmp.com/Entre before upgrading to Version 7.9.8 (12/5/17).

Features

Extended Status Information

Entré now pulls information for the **Extended Status** overview from the database, not the panel. This change removes unnecessary network traffic and improves Entré's overall operation speed.

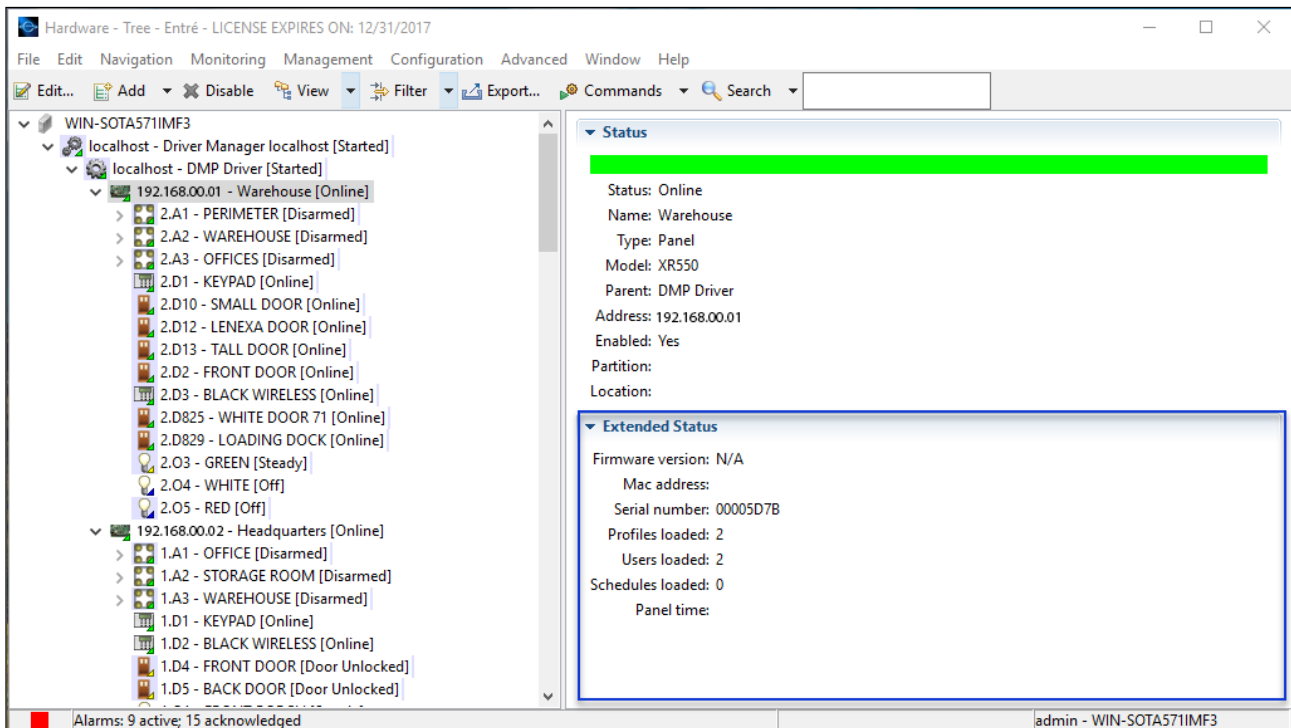


Figure 1: Extended Status Information

Audit Record Shows Before and After

When you navigate to the **Audit Trail** and view a specific **Audit Record**, you can now see the **Before** and **After** status of any changes along with a short description. Depending on the type of change made, the description may include limited details.

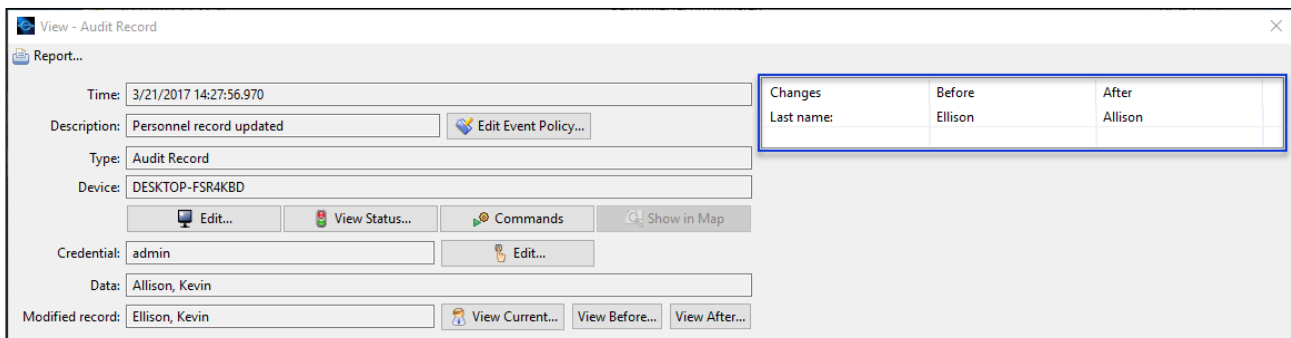


Figure 2: Audit Record Changes

Panel Firmware Version Support

Entré now supports XR150/XR550 Series panels with Version 171 firmware and below.

Multi-Device Programming

With Entré Version 7.9.8 (12/5/17) you can make programming changes to multiple devices at the same time. The devices you are editing must be in the same family. This feature is especially useful when changing programming for large groups of panels, 734 Weigand Interface Modules, wireless receivers, or zones.

To edit multiple devices, navigate to the **Hardware List** and order the list by **Type**. Hold down the Shift or Ctrl key and highlight multiple devices. Click **Group Edit** in the top menu. Fields that are editable will be available. Any changes you make are sent to all devices in that group.

Activate and Deactivate Cellular Communicators

Entré now allows you to activate and deactivate cellular communicators. For panels with primary or backup cellular communication, navigate to the **Edit - Panel** window and select **Communication**. Select a cellular communicator to edit, or add a new one. In the add or edit **Communication Path** window, enter the necessary information and click **Cellular Activation**. See Figure 3. You can also retrieve the status of existing cell cards that have been activated from Entré.

Figure 3: Cellular Activation Button

Allow Duplicate IPs

You can now have two panels with the same IP address, but different port numbers.

Personnel ID# Characters

Hyphens are now allowed when entering Personnel ID#s.

Historical Events Driver

In the Historical Events Driver, you can set live events to be copied and then pruned once they are older than a defined number of days.

Navigate to the **Hardware Tree** and right-click on the **Historical Events Driver**. Click **Edit**, and then select the **Configuration** section in the **Edit** window. You can enter a number of days in the **Prune live events older than** and **Copy live events older than** fields. See Figure 4.

Copying events sends duplicate live event records to the Historical Events Driver. Pruning events deletes them from the live event record. Pruning will not delete any events in the Historical Events Driver, unless the **Permanently delete historical events** check box is selected.

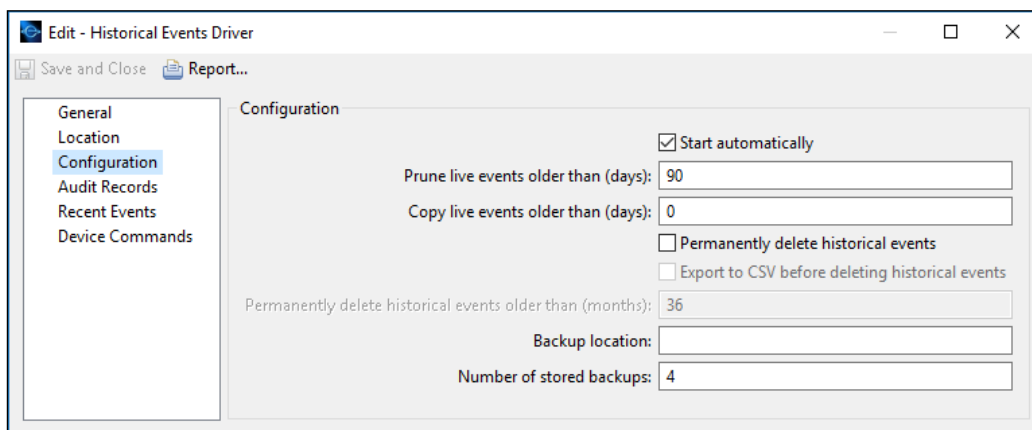


Figure 4: Historical Events Driver Configuration

Partition-Restricted Workstations

In **System Configuration**, you can now hide workstations across partitions by using the **Partition-restricted workstations: only explicitly licensed items** check box in the **Miscellaneous** section. See Figure 5.

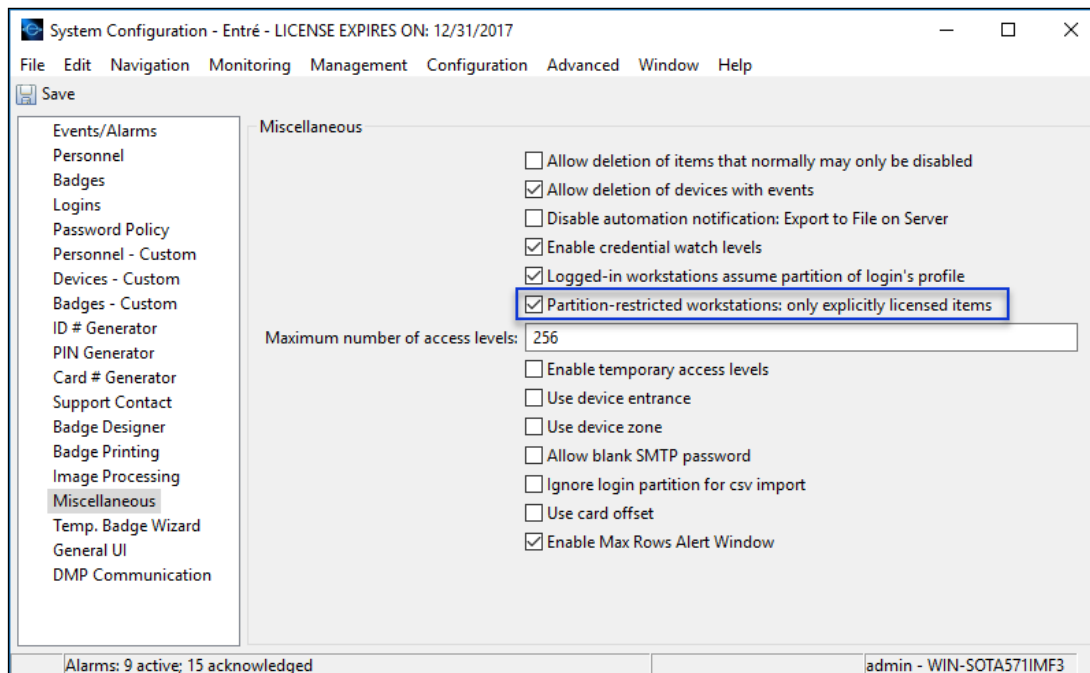


Figure 5: Partition-Restricted Workstations

Automatically Send Hardware Configuration Changes

Version 7.9.8 (12/5/17) allows hardware configuration changes to be automatically sent to panels. Users can now navigate to **System Configuration**, select the **DMP Communication** section, and check the **Auto send hardware configuration** option. This feature is only recommended for experienced Entré users. See Figure 6.

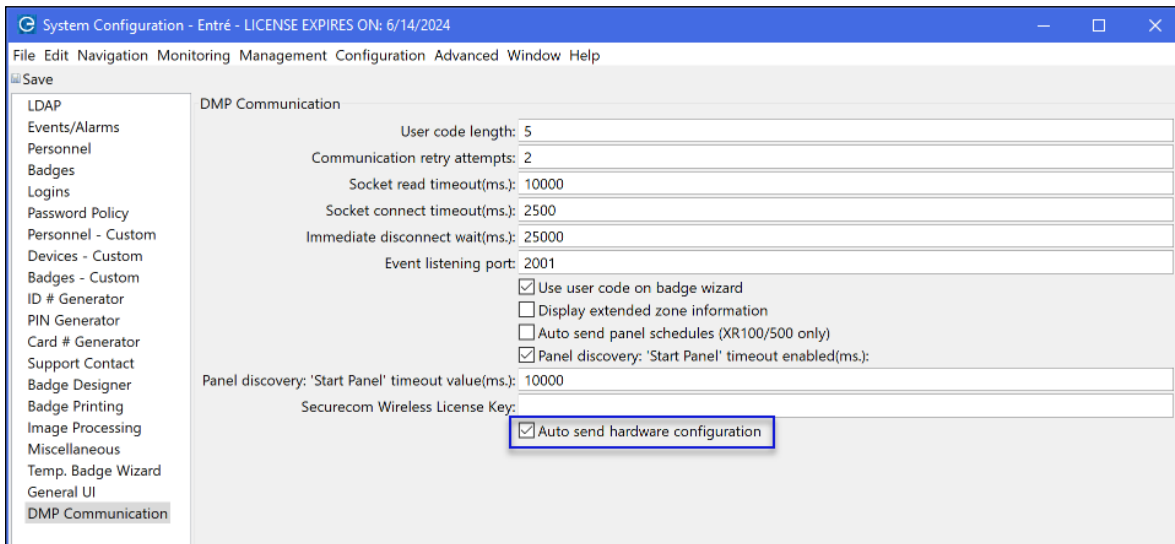


Figure 6: Auto Download Hardware Configuration Option

Below is a break-down of the changes that are automatically sent when panel programming is created or edited:

When this is created ...	This is automatically sent to the panel.
24-Hour Zone	Panel Options and Zone Information
Area	Panel Options
Area Zone	None
Device	Device Setup and 734 Options
Output	Panel Options
Output Group	Panel Options

When this is edited ...	This is automatically sent to the panel.
24-Hour Zone	Zone Information
Area	None
Area Zone	None
Device	Device Setup and 734 Options
Output	None
Output Group	None

If the **Auto send hardware configuration** option is unchecked, hardware configuration changes will need to be sent to the panel manually.

Global Check-In Time

Versions previous to 7.9.8 (12/5/17) used the panel's configured check-in time to determine if the panel was still online. Now, Entré also has the option to use a global check-in time. Entré automatically uses the higher of the two values to ensure that the panel is communicating properly. The default global check-in time is 20 minutes. The 20-minute default time can be changed by an Entré-certified technician, if necessary. For this feature to be available, Entré Check-In Minutes must be programmed in the panel from Remote Options. This allows the panel to continue checking in without Entré marking it as offline.

Remote Link™ Zone Type Changes

When Remote Link is used to change a 24-Hour zone to an Area zone, or an Area zone to a 24-Hour zone, the associated panel is stopped in Entré. The panel remains stopped until the zone is manually changed. This allows the user to control what happens to the zone's audit history.

Faster Group Edit

Entré's group edit process is now faster.

Badge Import Utility

Entré now offers the ability to import batches of unassigned badges using the Entré Importer utility. Card numbers, hot stamps, and user codes can be imported into Entré and stored. Users no longer have to key in each card as they are assigned to personnel.

Updated Functionality

Improved Installation Process

Entré now features a simpler and more efficient installation process. Whether a technician is installing a new instance of Entré or upgrading an existing instance, Entré offers a series of easy-to-follow installation screens that allow the technician to select the options that best fit the location. For complete instructions on how to install Entré, refer to the How-To Guide: Installing Entré on dmp.com/entre.

24-Hour Zone Wireless Properties

Wireless properties are now enabled for 24-hour zones.

CSV Import Validation

Now, when performing a CSV import, Entré checks the CSV's data before allowing it to be imported. This helps prevent invalid values from stopping the panel driver.

Holiday and Calendar Changes

All holiday and/or calendar changes are now automatically sent to associated panels. Also, when a holiday date is deleted from the calendar it is cleanly removed from the panel.

Editing Wireless Zones

With Version 7.9.8 (12/5/17), you can now edit the settings of a wireless zone without saving it first.

Panel Configuration Download

If you choose to clear and download panel configuration for users, profiles, and schedules, Entré removes all existing users, profiles, and schedules from the panel and sends down the information through Entré. With Version 7.9.8, the user number always starts at 2 when doing a clear and download.

Hardware Tree Error

Editing offline panels from the Hardware Tree does not display an error in Version 7.9.8 (12/5/17).

Panel to Badge Reconciliation

When viewing a specific badge in the badge **Edit - Badge** display, user codes will only show as being associated with the correct panels in the **Panels downloaded to field**.

64-Bit Card Reader Stability

Version 7.9.8. (12/5/17) resolves an issue where the 64-Bit card reader would intermittently fail when trying to read a credential.

Upgrading or Ordering Software

Entré Security & Access Management Software Version 7.9.8 (12/5/17) is automatically provided to dealers who have previously purchased an Entré license and are current with their Entré support agreement.

Note: Keep in mind that as of Version 7.9.5 (8/2/16) all licenses are counted as Max Clients instead of being separated into Web Clients and Work Stations.