

XT System Design Guide



CONTACT US

Visit DMP.com/Contact_Us for contact information and sales and training support maps.

Inside Sales

1-877-757-4367

InsideSales@DMP.com

Tech Support

1-888-436-7832

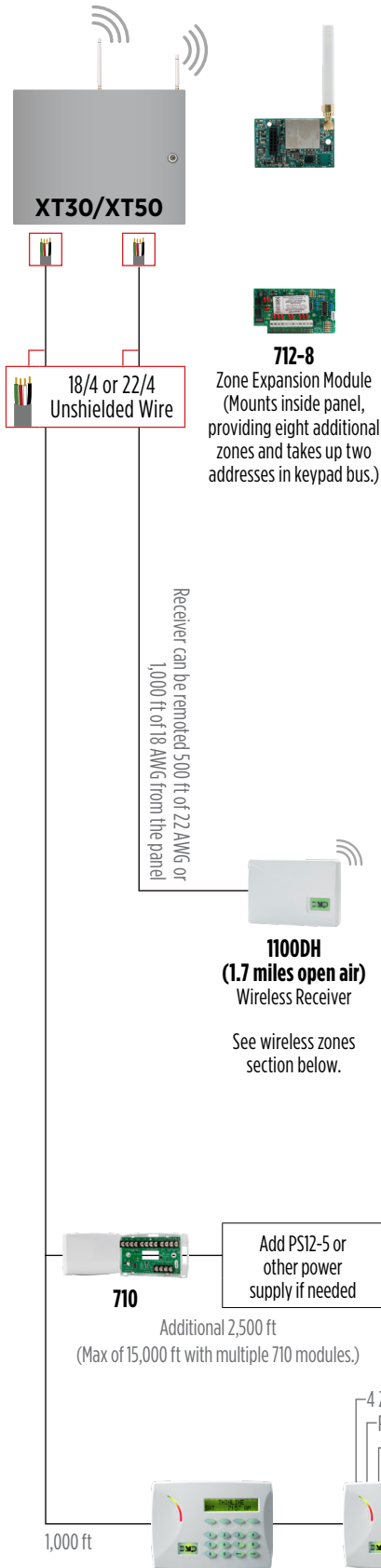
TechSupport@DMP.com

Customer Service

1-866-266-2826

CustomerService@DMP.com

System Design



To monitoring center via dialer, cellular or network

XT50 includes 1100 Wireless Receiver built in (add external 1100DH if installation requires)

XT30 does not include 1100 Series Wireless Receiver

To add cellular, install 263LTE-2 (DualSIM)

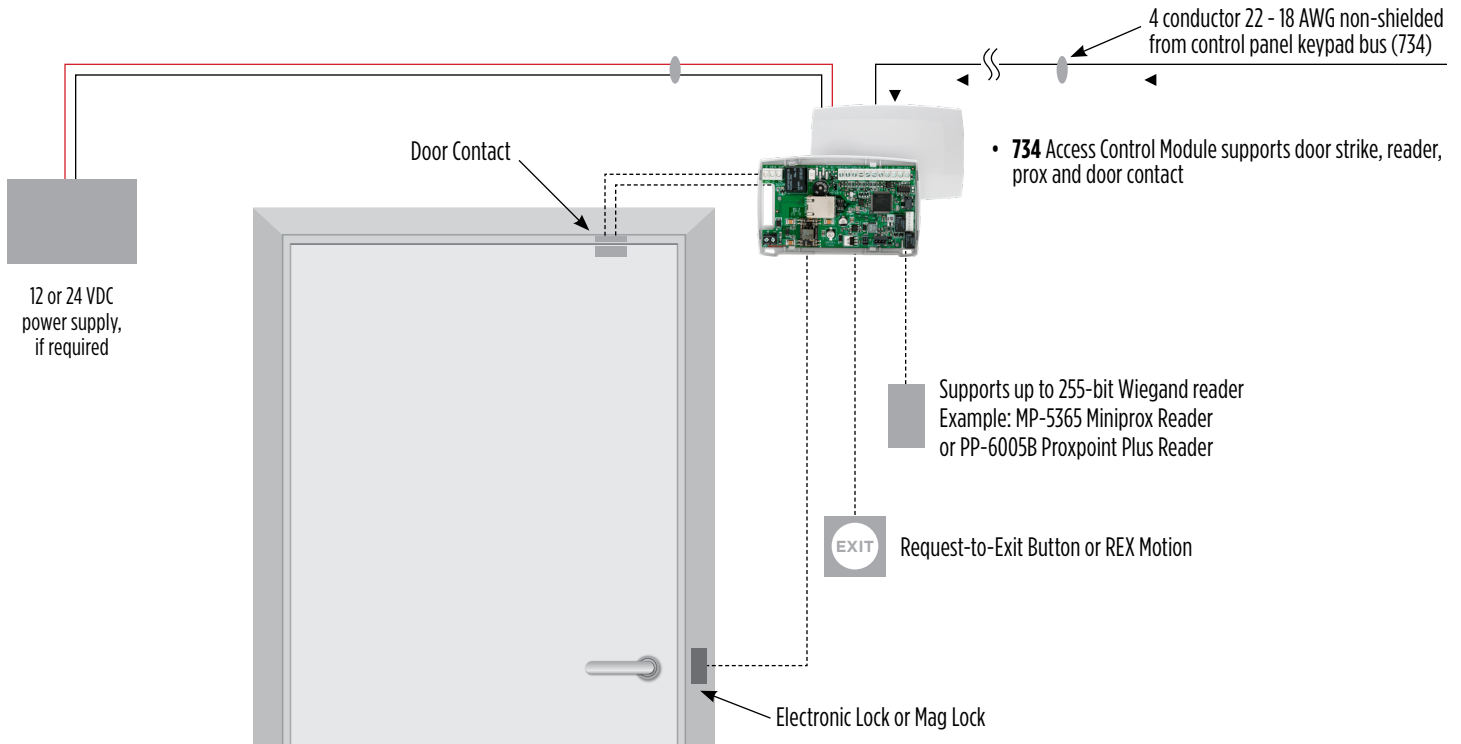
WIRELESS DEVICES

 1100R (1,200 ft) Repeater (Max of 8 Repeaters)	 1101 Universal Transmitter (Internal and/or External)	 1102 Universal Transmitter	 1103 Commercial Universal Transmitter with Wall Tamper (Internal and/or External)	 1106 Universal Transmitter
 1107 Micro Window Transmitter	 1112 Water/Temp Sensor	 1114 Four-Zone Expander	 1115 Water/Temp Sensor	 1116 Relay Output
 1117 LED Output Annunciator	 1119 Door Sounder "Detex"	 1122 PIR	 1126R 360° Ceiling Mount PIR (20° Radius @ 8' Height)	 1127C Wall Mount Curtain PIR (50' Curtain)
 1127W Wall Mount Wide Angle PIR (36° and 84°)	 1128 Glassbreak Detector (12' Range)	 1134 Access Control Module	 1135 Siren (Adjustable to 110 dB or 100 dB)	 1136 Remote Chime
 1139 Bill Trap	 1141 Wall Button	 1142 Two-Button Hold-Up Transmitter (Under Counter)	 1144-1 One-Button Key Fob (Panic)	 1144-2 Two-Button Key Fob (Arm/Disarm)
 1144-4 Four-Button Key Fob (Programmable)	 1144-D Dual-Button Key Fob (Panic)	 1166 Smoke Ring	 1168 Smoke/CO/Low Temp Detector	 1183 Heat Detector
			 1184 CO Detector	

Zone expanders use up one address for every four zones. Example: A 714-8 takes up two of the available keypad bus addresses.

System Applications

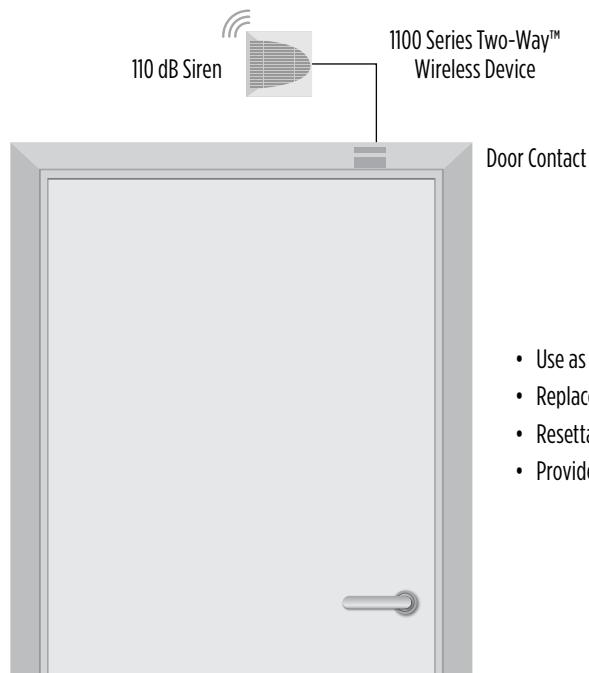
ADD A DOOR OF ACCESS CONTROL



Unlike the access control capabilities of our XR Series™ panels, the door access capabilities of the XT panel are basic. The biggest advantage of XT50 door access is the ability to easily grant access to doors electronically. Concerns of unreturned keys and key duplication are eliminated by using this functionality. On the XT50 panel, all enrolled cards will work on all system readers at all times.

Doors with readers will always be locked unless they are manually unlocked by the user. There are no schedules or profiles applied to users or doors in the XT50 system. On the XT50, there is no buffer history of any credential used nor is there any integration with Virtual Keypad™. Doors will not be able to be opened through a keypad, menu or system zone.

1119 WIRELESS SOUNDER & ZONE



- Use as loud local “chime” with 1 second sound
- Replace an alarmed crash bar with 5 minute sound
- Resettable from keypad
- Provides door contact zone intrusion system

PANEL SPECIFICATIONS

	XT30	XT50
Total Number of Zones	42	58
Number of Possible Hardwired Zones	42	42
Number of Possible DMP Wireless Zones	28	48
Number of Areas	6	6
Event Buffer	100	200
Number of User Codes	30	99
Number of Door Access Points	8	8
Number of Supervised Keypads	8	8
Auxiliary Power	500 mA	500 mA
Switched 4-Wire Smoke Detector Power	100 mA	100 mA

KEYPAD FEATURES

Model	Series	Zones	Normal Backlight	Internal Relay	Wiegand Input	Internal Prox	Compatible Panels
7060	Thinline	None	Green	No	No	No	XT & XR Series
7063	Thinline	None	Green	No	No	Yes	XT & XR Series
7070	Thinline	Four	Green	No	No	No	XT & XR Series
7073	Thinline	Four	Green	Yes	Yes	Yes	XT & XR Series
7872	Touchscreen	Four	Blue	Yes	No	Yes	XT & XR Series
7873	Touchscreen	Four	Blue	Yes	Yes	Yes	XT & XR Series
8860	Touchscreen	None	Blue	No	No	No	All
9862	Touchscreen	None	Blue	No	No	Yes	All

WIRELESS ZONES

Receiver Type	Zone Range	Total Wireless Zones
Built In 1100 Series	11-14, 21-24, 31-34, 41-44, 51-54, 61-64, 71-74, 80-99	48
External 1100 Series	11-14, 21-24, 31-34, 41-44, 51-54, 61-64, 71-74, 81-84	32

MODEL NUMBER DESCRIPTION

XT50	D	N	S	-	G
PANEL	DIGITAL DIALER	NETWORK	ENCLOSURE SIZE		ENCLOSURE COLOR
XT30 XT50			M - Medium S - Small PCB - Board Only		G - Gray

Note: Models ending in PCB indicate it is the PC board only, no cabinet.

Unless sold in a kit or package, the XT panel does not include a power supply and the 321 power supply must be ordered separately.



Manage your DMP panel from your computer, tablet or smartphone.

