



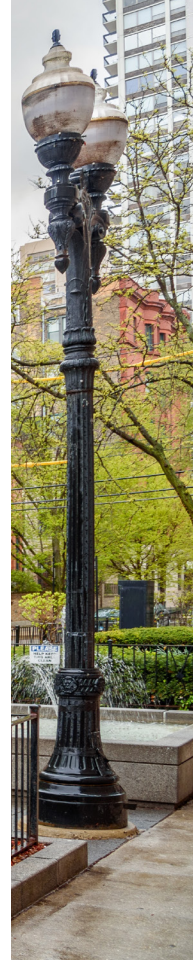
## XT30/XT50

**Thank you for your purchase!**

### **INCLUDES**

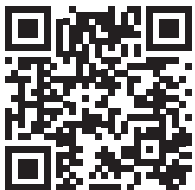
---

- **Full System User Guide QR Code**
- **How to Handle an Alarm**
- **Arm an All/Perimeter System**
- **Disarm an All/Perimeter System**





To view the full  
**XT30/XT50 System**  
**User Guide**,  
scan this QR code  
or visit [DMP.com](https://dmp.com).



## HOW TO HANDLE AN ALARM

Enter your user code or present your credential to the keypad if it has a built-in proximity reader. You will see:

**IS THIS A FALSE ALARM?**  
**YES NO**

## Real Alarm

Press **NO** to notify the emergency monitoring center. Your system will remain armed.

## False Alarm

Press **YES** to cancel the alarm. Your system will disarm.

## ARM AN ALL/PERIMETER SYSTEM

Thinline Keypads

1. Press **CMD** until **ARM DISARM** displays. Select **ARM**.
2. Enter your user code and the keypad displays **PERIM ALL**.
3. Select **ALL** to arm all areas. The keypad displays **ALL SYSTEM ON**. Select **PERIM** to arm only the perimeter. The keypad displays **PERIMETER ON**.

Touchscreen Keypads

1. Press and release the shield to open the arming options screen. Select **ARM**.
2. Enter your user code if prompted and the keypad displays **PERIM ALL**.
3. Select **ALL** to arm all areas. The keypad displays **ALL SYSTEM ON**. Select **PERIM** to arm only the perimeter. The keypad displays **PERIMETER ON**.

## DISARM AN ALL/PERIMETER SYSTEM

Thinline Keypads

1. Press **CMD** until **ARM DISARM** displays.
2. Select **DISARM**. The keypad displays **ALL? NO YES**.
3. To disarm all areas, select **YES**. To disarm individual areas, select **NO**. The keypad displays each area you have access to. Select **YES** to disarm the areas and **NO** to leave the area unarmed.

Touchscreen Keypads

1. Press and release the shield to open the arming options screen. Select **DISARM**.
2. Enter your user code and the keypad displays **ALL? NO YES**.
3. To disarm all areas, select **YES**. To disarm individual areas, select **NO**. The keypad displays each area you have access to. Select **YES** to disarm the areas and **NO** to leave the area unarmed.