

# FEATURE UPDATE

## Remote Link™

March 2018

Effective March 30, 2018, all Remote Link software will be updated to Version 1.82 (03/20/2018). If your current Remote Link software is previous to Version 1.46, update to Version 1.59 (available at [DMP.com/Dealer\\_Direct](http://DMP.com/Dealer_Direct)) before updating to Version 1.82 (03/20/2018).

### Features

#### LTE Support

You can now use Remote Link to activate LTE SIM cards. In Remote Link panel communication programming, select **Cellular Network** as the **Communication Type** and select the **Activate** button. Enter the necessary account information and select **LTE SIM** as the **SIM Type** to activate an LTE SIM card. See Figure 1.

Figure 1: Activate LTE SIM

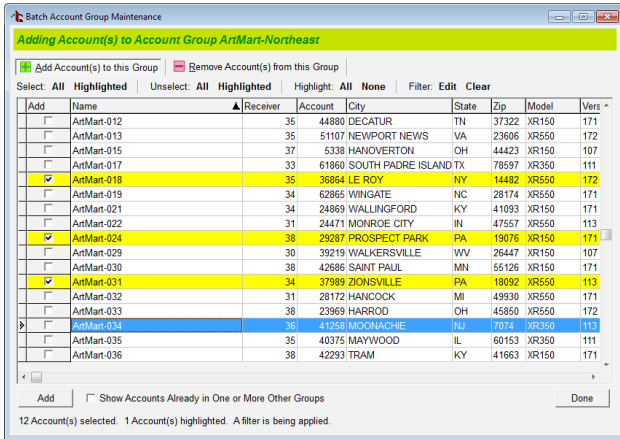
#### Batch Account Group Maintenance

Remote Link 1.82 allows you to perform account group maintenance tasks in batches. You can add, change, or remove accounts in an account group and send that information to multiple account groups at one time, giving you a more powerful tool to manage accounts in Remote Link.

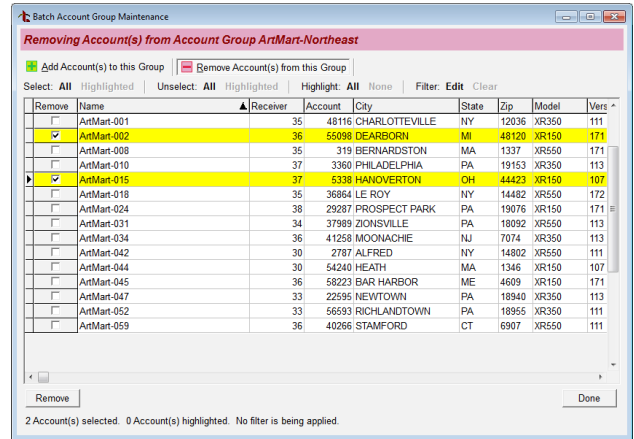
To use this feature, select **File** in the top menu and select **Account Group Information**. Select a **Group Name** in the **Account Groups** window and the accounts in that group display. Select the **Batch** button. See Figure 2.

Figure 2: Account Groups

From here, select either **Add Account(s) to this Group** or **Remove Account(s) from this Group**, and then select the box(s) next to the names to perform the chosen action. See Figures 3 and 4.

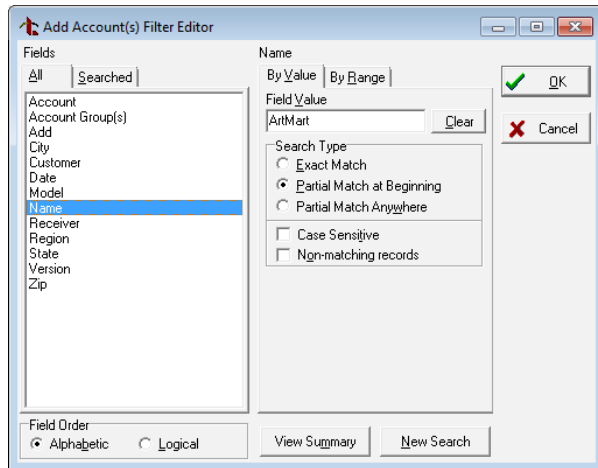


### Figure 3: Adding Accounts to a Group

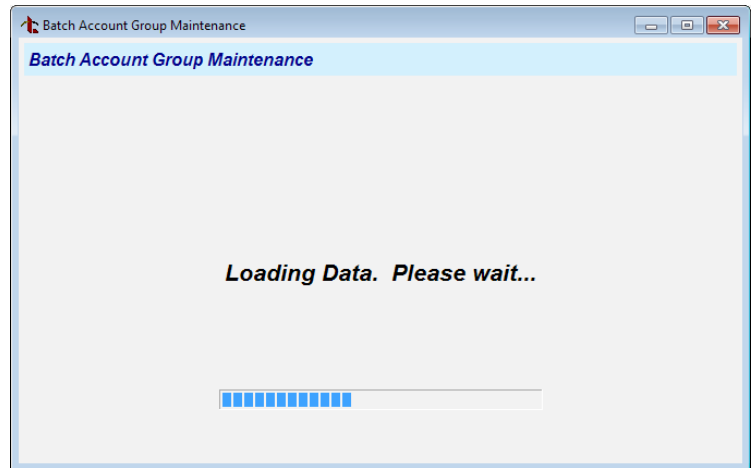


#### Figure 4: Removing Accounts from a Group

To display and filter a list of all the panels programmed in Remote Link, select **Edit**. The **Add Account(s) Filter Editor** window displays. From here, you can search for accounts to add, change, or delete. Select the **OK** button when finished and the **Batch Account Group Maintenance** window displays, indicating the account information is being updated. See Figures 5 and 6.



### Figure 5: Filter and Add Existing Accounts to a Group



### Figure 6: Loading Updated Data

## Improvements

## Faster Direct Connect

With Remote Link Version 1.82 (03/20/2018), the direct connect feature drastically reduces the amount of time Remote Link takes to connect to cellular panels.

## Obtaining the New Software

The Remote Link Version 1.82 (03/20/2018) update is available for download, free of charge, on the DMP Dealer Direct Website at [DMP.com/Dealer\\_Direct](http://DMP.com/Dealer_Direct).