

Remote Link™

June 2017

Version 1.80 Software Update

Effective June 13, 2017, all Remote Link software is updated to Version 1.80 (6/12/17). If your current Remote Link software is previous to Version 1.46, update to Version 1.59 before updating to Version 1.80 (6/12/17).

Features

With Version 1.80 (6/12/17), Remote Link offers a new configuration option. Now, when you navigate to the **Remote Link Configuration** window and select the **Other** tab, you will see the **Update Time Default** option. See Figure 1.

If the **Update Time Default** option is enabled, the **Update Time** checkbox in the **Send To Panel** window will be checked by default. See Figure 2.

The **Update Time Default** option is useful if you frequently send time updates to panels and would like the **Update Time** box to automatically be checked.

Updated Functionality

Remote Link Version 1.80 (6/12/17) also offers enhanced product stabilization and performance.

Obtaining the New Software

The Remote Link Version 1.80 (6/12/17) update is available for download free of charge on the DMP Dealer Direct Website at <http://dmp.com/dealer>.

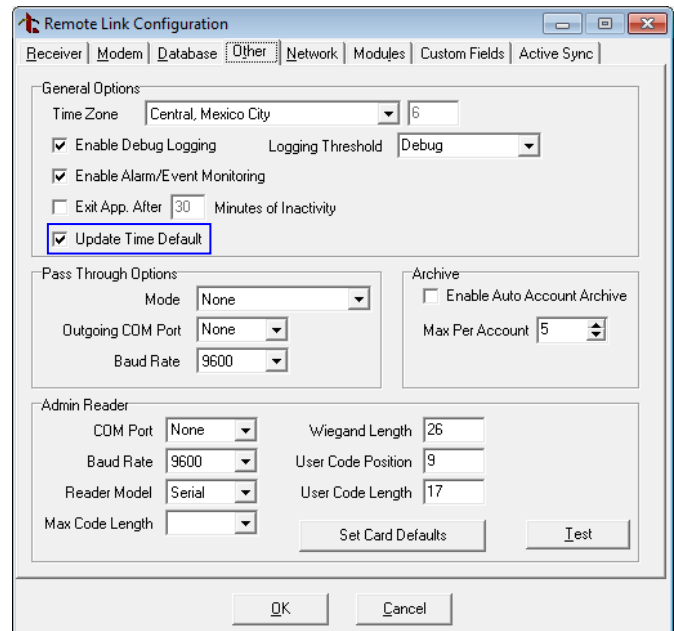


Figure 1: Remote Link Configuration Window

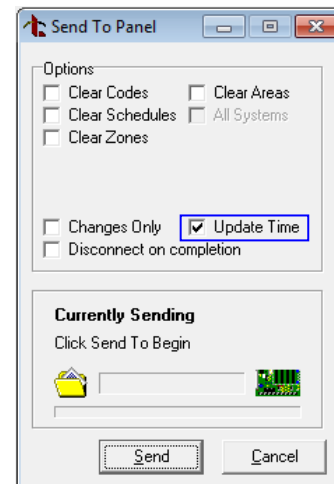


Figure 2: Send To Panel Window