

Remote Link™

May 2017

Version 1.80 Software Update

Effective May 3, 2017, all Remote Link software is updated to Version 1.80 (4/14/17). If your current Remote Link software is previous to Version 1.46, update to Version 1.59 before updating to Version 1.80 (4/14/17).

Features

The following features require Version 171 firmware.

Z-Wave Back-Up and Restore

Remote Link™ now stores a copy of all Z-Wave programming in case there is a data loss at the panel or an associated 738Z Z-Wave Interface Module. This allows programming to be sent back to the panel or the 738Z if either one is damaged. You can back up Z-Wave settings by clicking the **Backup** button on the **Z-Wave Setup** window. If a previous backup exists, the **Restore** button is available and **Last Backup Date:** displays. This feature is available for XT30/XT50 and XTLplus Series panels.

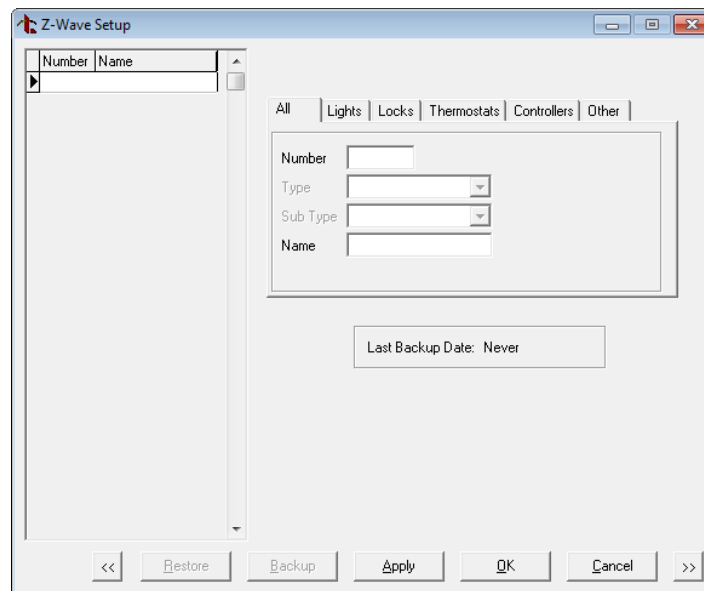


Figure 1: Z-Wave Backup and Restore

Output Options

Outputs can now be assigned to arming types. In the **Output Options** window, **Home/Perimeter Output**, **All/Away Output**, and **Sleep Output** are available. Enter output numbers to trigger those outputs along with a specific arming type. This feature is available for XT30/XT50, XTLplus, and XR150/XR550 Series panels.

Sunrise/Sunset Schedules

Sunrise/Sunset schedules can now be programmed through Remote Link. Navigate to **Favorite Schedules, Output Schedules, or Time Schedules** and choose either Sunrise or Sunset from the drop-down menu. Then, set the time and day options for the schedule. This feature is available for XT30/XT50, XTLplus, and XR150/XR550 Series panels.

The screenshot shows the 'Time Schedules' window. On the left is a list of schedules with columns for Number and Name. The first entry is '1 STANDARD BUSINESS'. To the right, the details for this schedule are shown. It includes fields for 'Number' (1) and 'Name' (STANDARD BUSINESS). Below these are two columns of time settings: 'Open/Begin/Activate' and 'Close/End'. Each column has input fields for Sunday through Saturday and three holiday options (A, B, C). At the bottom of each column is a 'Sunrise / Sunset' section with a dropdown menu (set to 'Sunrise' on the left and 'Sunset' on the right), a 'Before / After' dropdown (set to 'At'), and checkboxes for the days of the week (Sun, Mon, Tue, Wed, Thu, Fri, Sat). The bottom of the window features buttons for '<<', 'New', 'Delete', 'Apply', 'OK', 'Cancel', and '>>'.

Figure 2: Sunrise/Sunset Options for Time Schedules

Send User Codes to Locks

You can now send specific user codes to locks. In the **User Codes** window, select a user code and then check the **Send Code to Locks** option. Click **Apply** and all selected user codes are sent to all of the Z-Wave locks associated with the system. This feature is available for XT30/XT50 and XTLplus Series panels.

The screenshot shows the 'User Codes' window. On the left is a table with columns for Number, Code, Name, Department, and ID. The first row is selected, showing '99 3480 USER NAME'. To the right of the table are fields for 'Panel' (set to 99), 'Level' (set to Standard), 'User Code' (3480), 'User Name' (USER NAME), and 'Areas' (1-6). Below these fields are three checkboxes: 'Temporary' (unchecked), 'Arm Only' (checked), and 'Send Code to Locks' (unchecked). At the bottom right of the right-hand panel is a 'Description' text area. The bottom of the window features buttons for 'Copy', 'Paste', 'Batch', 'Filter', 'Scan Card', '<<', 'New', 'Delete', 'Apply', 'OK', 'Cancel', and '>>'.

Figure 3: Send Code to Lock Checkbox

Instant Arm Option

Remote Link Version 1.80 (4/14/17) features an instant arm option for areas. See Figure 4.

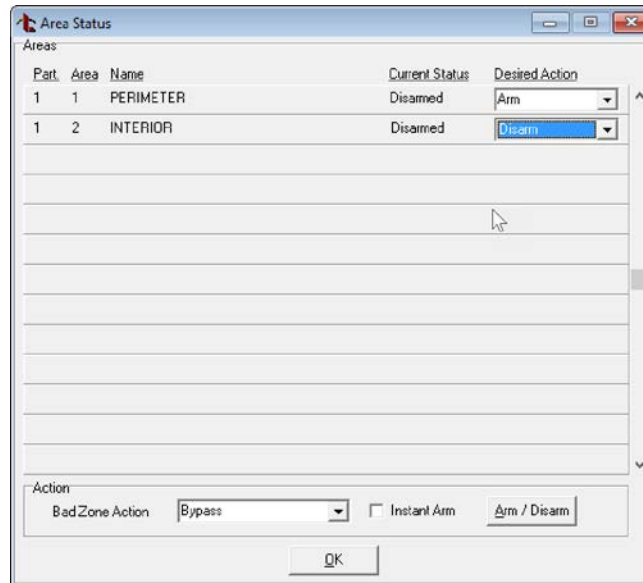


Figure 4: Instant Arm Option for Areas

Technician User

A new user profile option is available for XR150/XR550 Series panels. Now, users can be assigned the Technician User profile. Technician users cannot disarm a system that has been armed by a standard user. If the Technician User arms the system, then he or she can disarm it. This feature allows technicians to arm and disarm systems for testing purposes. Navigate to the **Profiles** screen and check the **Technician User** box to enable this profile option.

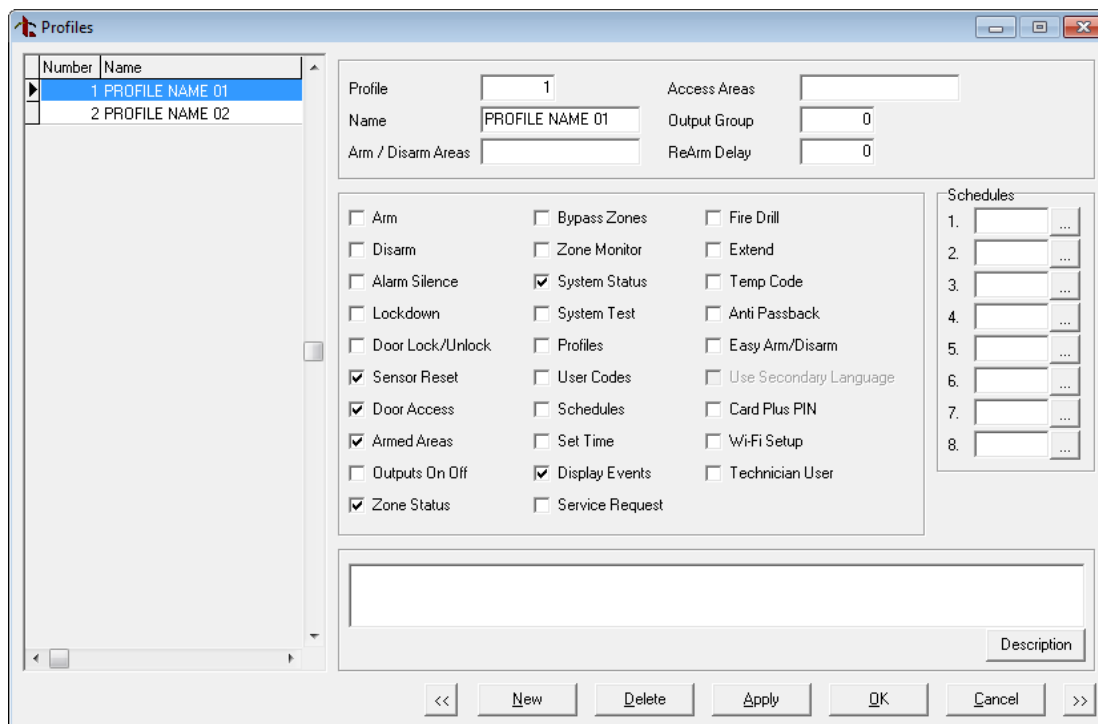


Figure 5: Technician User Profile Option

Obtaining the New Software

The Remote Link Version 1.80 (4/14/17) update is available for download free of charge on the DMP Dealer Direct Website at <http://dmp.com/dealer>.