

## Remote Link and System Link

July 2015

### Version 1.75 Software Update

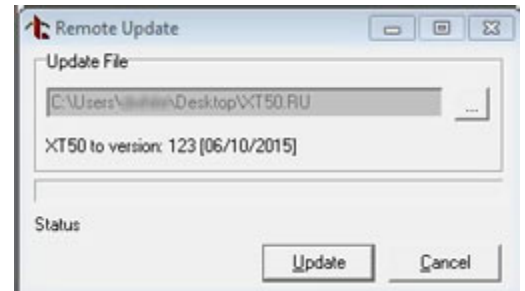
Effective July 9, 2015, all Remote Link and System Link software is being manufactured as Version 1.75 (7/8/15). If your current Remote Link or System Link software is previous to Version 1.46, update to Version 1.59 before updating to 1.75 (7/8/15).

### Features

#### Remote Updates

Remote Link now supports remote firmware updates over network for XT30/XT50 Series Control Panels operating with Version 123 or higher firmware and the soon to be released Level M hardware.

For more information on this feature refer to the XT30/XT50 Level M Hardware Update (TU-0797).

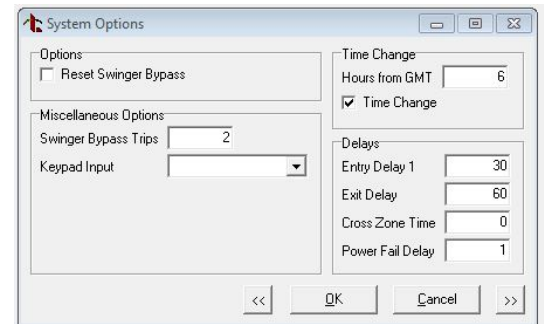


#### CellComSL Series Ademco/Honeywell ECP

A new option, Keypad Input, is now available in System Options for CellComSL Series Communicators operating with Version 123 or higher firmware. This option supports Ademco/Honeywell ECP Bus Communication. The CellComSL Series Communicator requires the soon to be released Level E hardware.

For more information on this feature refer to the following Feature and Hardware Updates:

- CellComSL Version 123 Feature Update (TU-0785)
- CellComSL Level E Hardware Update (TU-0787)



Also refer to Keypad Input and Ademco/Honeywell ECP Connection in the CellComSL Installation/Programming Guide (LT-1339).

### Obtaining the New Software

Remote Link and System Link Version 1.75 (7/8/15) updates are available for download free of charge on the DMP Dealer Direct Website at <http://dmp.com/dealer>.