

## Remote Link and System Link

### August 2013

#### Version 1.68 Software Update

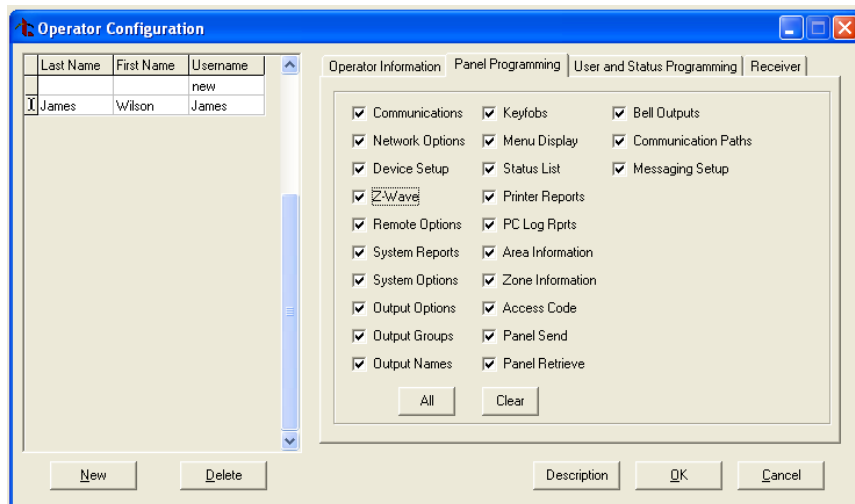
Effective August 29, 2013, all Remote Link and System Link software is being manufactured as Version 1.68 (8/29/13). If your current Remote Link or System Link software is previous to Version 1.46, update to Version 1.59 before updating to 1.68 (8/29/13).

**Important Information:** To provide better scalability for growth, SecureCom Wireless has upgraded servers used to provide dealers remote programming of panels over a cellular connection. The SecureCom Wireless server upgrades were completed in November 2012. Older versions of Remote Link prior to version **1.59 (6/24/11)** no longer have the ability to remote program through a panel's cellular connection. If using an older Remote Link version and your company remote programs through a panel's cellular connection, a Remote Link update is required. There is no requirement to update for remote programming if using Remote Link Version 1.59 (6/24/11) or higher.

#### Updated Operation

##### Operator Configuration

After updating Remote Link to Version 1.68 (8/20/13), operators other than the default "new" were unable to view or program Z-Wave Favorites. Remote Link Version 1.68 (8/29/13) allows access to the Favorites window in panel programming options when the Z-Wave checkbox is checked in Operator Configuration.



#### Obtaining the New Software

Remote Link and System Link Version 1.68 (8/29/13) updates are available for download free of charge on the DMP Dealer Direct Website at <http://dmp.com/dealer>.