

## Remote Link and System Link May 2009

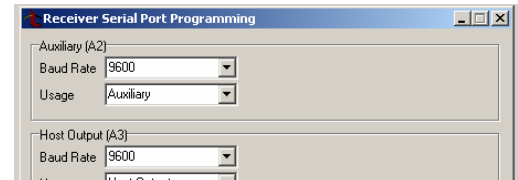
### Version 1.48 Software Update

Effective May 2009, all Remote Link and System Link software is being manufactured as Version 1.48 (5/26/09). This version is an update from the Version 1.48 (5/7/09) previously shipped and contains updated operations.

### Updated Operation

#### Serial Port Programming

The Auxiliary (A2) port Usage drop-down has been updated to display 'Auxiliary' as the default selection. Previously, this field was blank.



#### Programming Zone

Remote Link now properly allows zone 80 to be programmed for new XT50 Series panel accounts using software Version 101. This did not affect pre-existing accounts.

Previously the following error message would display: "This zone requires Built-in 1100 wireless to be enabled in the System Options menu".

### Obtaining the New Software

Remote Link Version 1.48 is available for download free of charge on the DMP Dealer Direct Website at <http://dmp.com/dealer>.