

Remote Link and System Link February 2009

Version 1.46 Software Update

Effective February 2009, all Remote Link and System Link are being shipped as Version 1.46 (1/23/09) software. This version is an update from the Version 1.45 (12/30/08) software previously shipped and contains new features.

Remote Link and System Link are available for download free of charge on the DMP Dealer Direct Website at <http://dmp.com/dealer>.

Features

SecureCom Rate Plans

Remote Link now supports selection of new SecureCom Cellular Rate plans effective February 2009.

Plans available and their suggested applications:

<i>XT Series only using Model 380-200 SIM Card</i>	<i>SIM Card</i>	<i>Data Included</i>
Plan 203: Back-up alarm signal only	Level 200	0kb
Plan 205: Back-up or primary alarm signal only, provides for weekly test	Level 200	50kb

<i>XT Series, XR100, and XR500 Series using Model 380-400 SIM Card</i>	<i>SIM Card</i>	<i>Data Included</i>
Plan 406: Back-up or primary alarm signal, provides for daily test	Level 400	50kb
Plan 408: Primary path, with hourly test and O/C reports for up to 4 areas.	Level 400	200kb
Plan 410: Primary path, with hourly test and O/C reports for up to 8 areas.	Level 400	300kb
Plan 416: Primary path, with 6 min check-in and O/C reports for up to 8 areas.	Level 400	1000kb

Note: If using XT Series for text messaging, a Level 400 SIM card must be used.

Cellular Activation with Vista

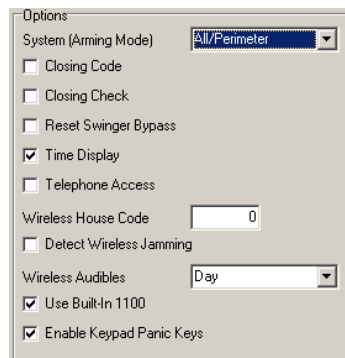
Remote Link now provides SecureCom cellular activations when running on a Microsoft Windows Vista operating system.

XT30/XT50 Series Version 102 Features

The following features support the soon to be released XT30 and XT50 Series Version 102 software.

XT50 Series Wireless Receiver

1100 Series wireless operation can now be provided via the keypad bus on the XT50 panel. The 1100D, 1100DI, or 1100DH Wireless Receivers can be used in place of the built-in receiver of the XT50 panel. Remote Link allows the Use Built-in 1100 option to be selected on XT50 panels using V102 software.



Messaging Destination Address

Remote Link now supports programming of up to 48 character destination addresses when the XT30/XT50 Series panel is sending email messages to a cell phone or other device.

XT30/XT50 Series Expansion Features

Remote Link now supports programming for additional hardware expansion of the XT30/XT50 Series panels. This includes:

- Areas 5 and 6 for area systems
- Keypad addresses 6, 7 and 8
- Zones 61-64, 71-74, 81-84

1126 Series Wireless PIRs

The next three XT30/XT50 Series Version 102 panel options have been added to support the 1126 Series Wireless PIRs:

- 1126C-W Wireless Ceiling Mount Curtain PIR
- 1126R-W Wireless Ceiling Mount 360 PIR
- 1126W-W Wireless Ceiling Mount Wide Angle PIR

Disarm/Disable

Select this option to disable the zone tripped message (short) to the 1100 Series Receiver from the 1126 PIR transmitter during the disarmed period. When disabled, the 1126 only sends supervision, tamper and low battery messages during the disarmed period to extend the transmitter battery life. Select NO to always send zone tripped messages in addition to supervision, tamper and low battery. Default is checked.

PIR Pulse Count

Select the number of infrared pulses (2 or 4) the 1126 PIR counts before sending a short message to the 1100X Series Receiver. The first infrared pulse starts a timer and count. If no additional infrared pulses occur in 25 seconds, the timer and count are reset. Default is 4.

PIR Sensitivity

Select the sensitivity setting for the 1126 PIR. Selecting LOW sets the 1126 to operate at 75% sensitivity for installations in harsh environments. Selecting HIGH sets the PIR to maximum sensitivity. Default is LOW.

DMP Wireless - Wireless PIR

Serial Number: 09123456

Contact: Internal

☐ Normally Open

Supervision Time: 240 min

☐ LED Enabled

☒ Disarm Disable

Wireless PIR Pulse Count: 4

Wireless PIR Sensitivity: Low

Obtaining the New Software

Remote Link and System Link Version 1.46 (1/23/09) updates are available for download free of charge on the DMP Dealer Direct Website at <http://dmp.com/dealer>.