

Dealer Admin Site

September 2017

Version 1.7.0 Update

Effective September 21, 2017, the Dealer Admin Site (dealeradmin.securecomwireless.com) is updated to Version 1.7.0 (9/21/17). As of Version 1.7.0 (9/21/17), the following features are now available.

Features

XR150/XR550 Programming

Version 1.7.0 allows dealers to program an XR150/XR550 Series control panel remotely from the Dealer Admin Site (dealeradmin.securecomwireless.com) by selecting **Full Programming** in the side menu. When a section within the Full Programming menu is clicked, the section opens to the programming options available on the XR150/XR550 Series panel. For help with a section of programming, click on the question mark icon. The XR150/XR550 Series Programming Guide (LT-1232) will open in a separate window and direct you to the section currently being programmed. See Figure 1. The following items can be programmed for XR150/XR550 panels through the Dealer Admin site:

- Communication
- Messaging Setup
- Remote Options
- System Options
- Output Information
- Output Groups
- Area Information
- Key Fobs
- Network Options
- Device Setup/734
- System Reports
- Bell Options
- Output Options
- Status List Display
- Zone Information
- Lockout Code

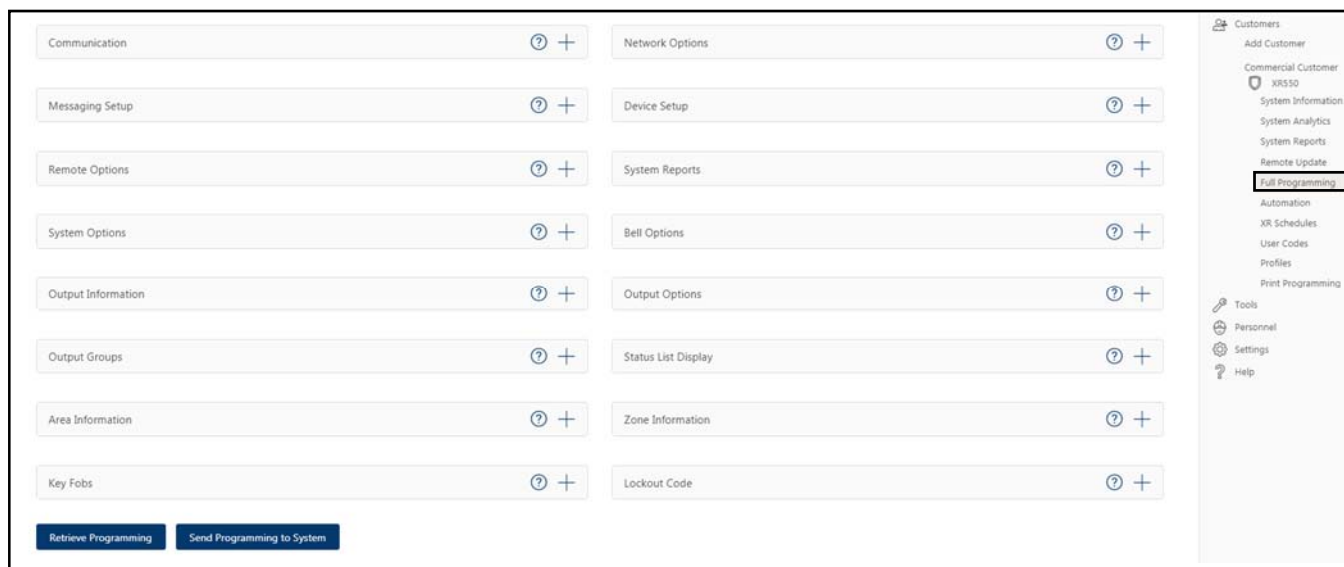


Figure 1: XR150/XR550 Programming

Retrieve and Send Programming

The programming page displays the last programming received from the panel. To confirm the most recent programming is displayed, click **Retrieve Programming**. The page will automatically populate to the current panel programming. To send panel all panel programming to the system at one time, click **Send Programming to System**. See Figure 1.

Tool Tips

Tool Tips provide more information about a particular field. To access the Tool Tips, hover over any text that is underlined with a blue, dotted line. See Figure 2.

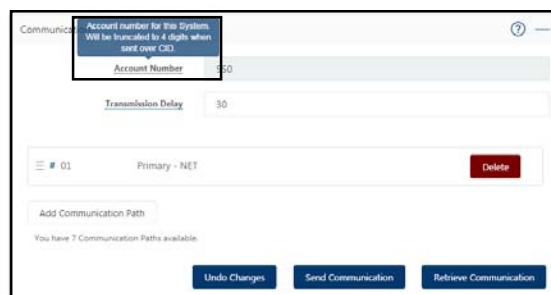


Figure 2: Tool Tips

Communication Paths

In the Communication section, you have the option to program up to eight separate communication paths. The number of paths you have left to program is always displayed at the bottom of the Communication section. See Figure 3.

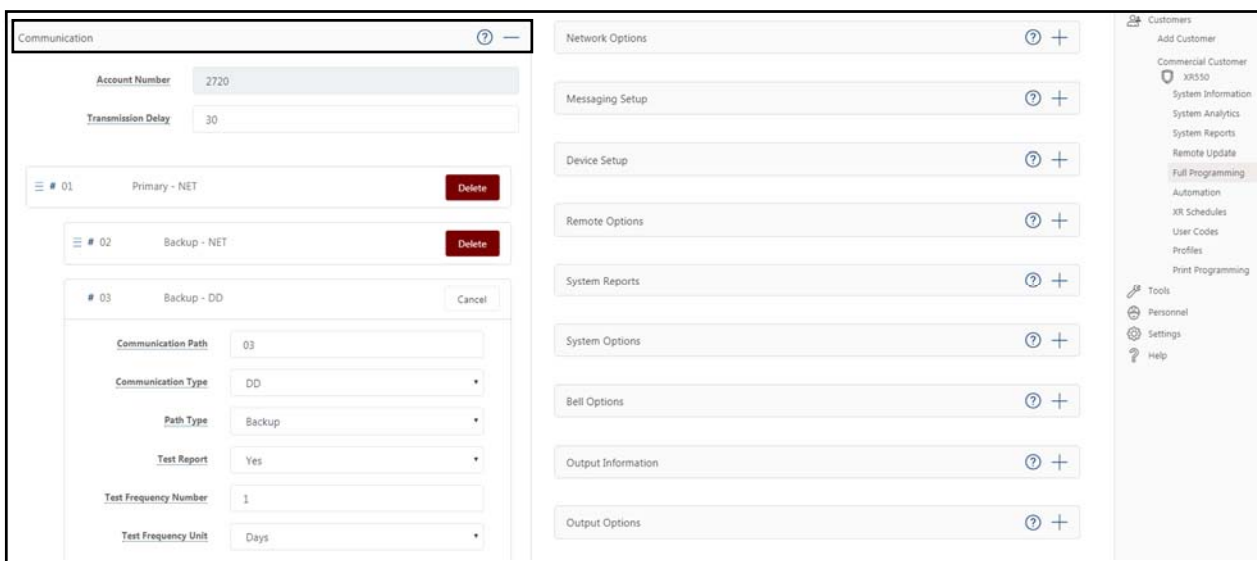


Figure 3: Communication Paths

Lockout Code

For additional security, we have added the ability to set a Lockout Code. This code limits the ability to program the panel locally. This option is only available on XR150/XR550 panels. See Figure 4.

Figure 4: Lockout Code

Device Setup and 734, 734N, 734N Wi-Fi Programming

Device Setup allows you to fully program door, fire, keypad, and zone expander devices. In addition, you are now able to program 734, 734N, and 734N-WIFI modules that are connected to your XR150/XR550 panels. See Figure 5.

Figure 5: Device Setup and 734 Programming

Initial Connection Attempt

The Initial Connection Attempt interface for all panels has been redesigned to provide more useful information about the failed and the successful connection attempts during the initial connection process. See Figure 6.

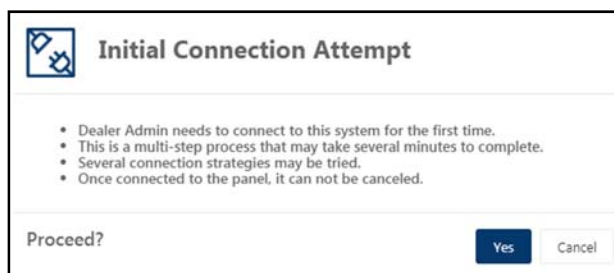


Figure 6: Initial Connection Attempt

Current Software Version Number and Date Code

You are now able to see the current software version number and the software release date of a panel. Access this information by clicking **System Information** in the side menu. See Figure 7.

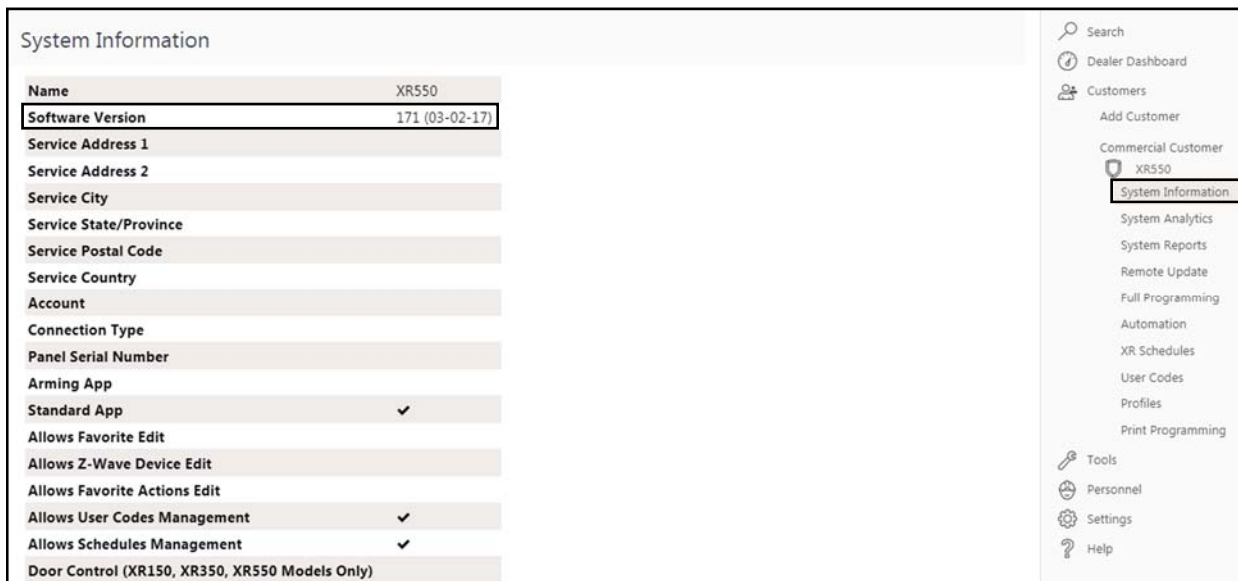


Figure 7: Current Software Version Number and Release Date

Automation Information

Automation allows you to view or refresh the information about your Favorites and Z-Wave devices. This option is now available for XR150/XR550 panels. Access this information by clicking **Automation** in the side menu. See Figure 8.

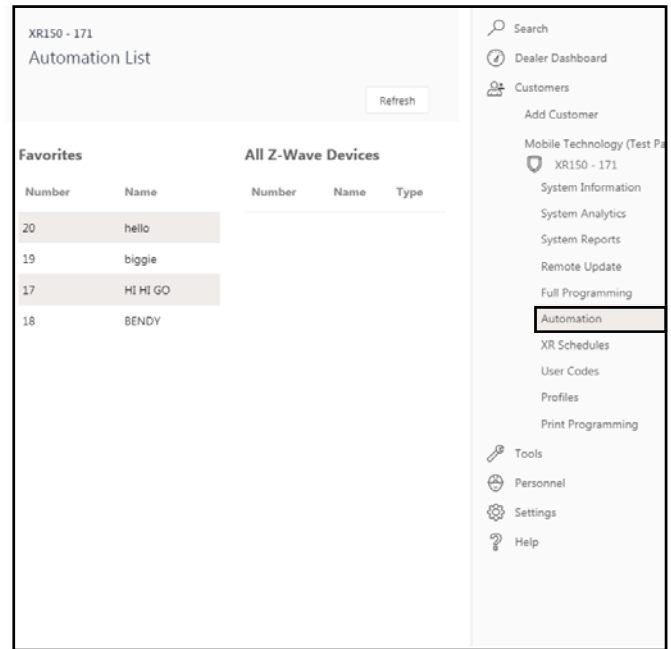


Figure 8: Automation

Print Programming

You have the ability to print a hard copy of the panel's programming by accessing **Print Programming** in the side menu. Use your browser's printing options to print the programming information. See Figure 9.

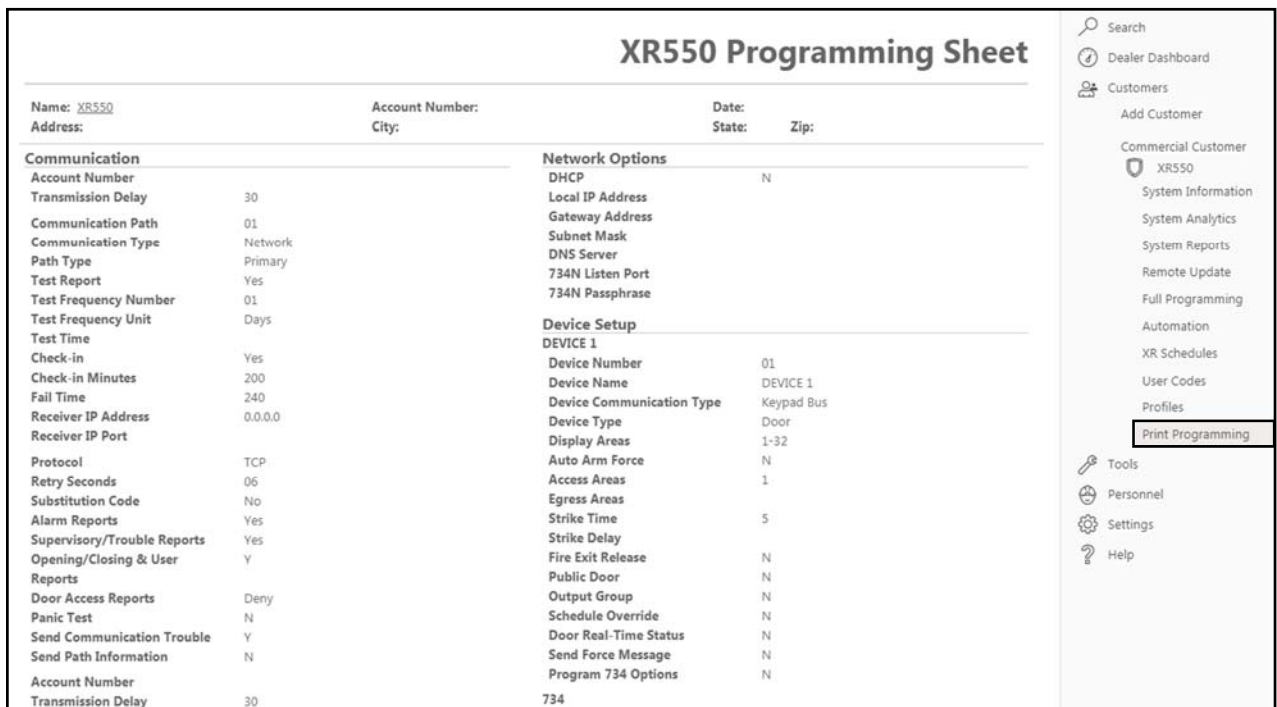


Figure 9: Print Programming