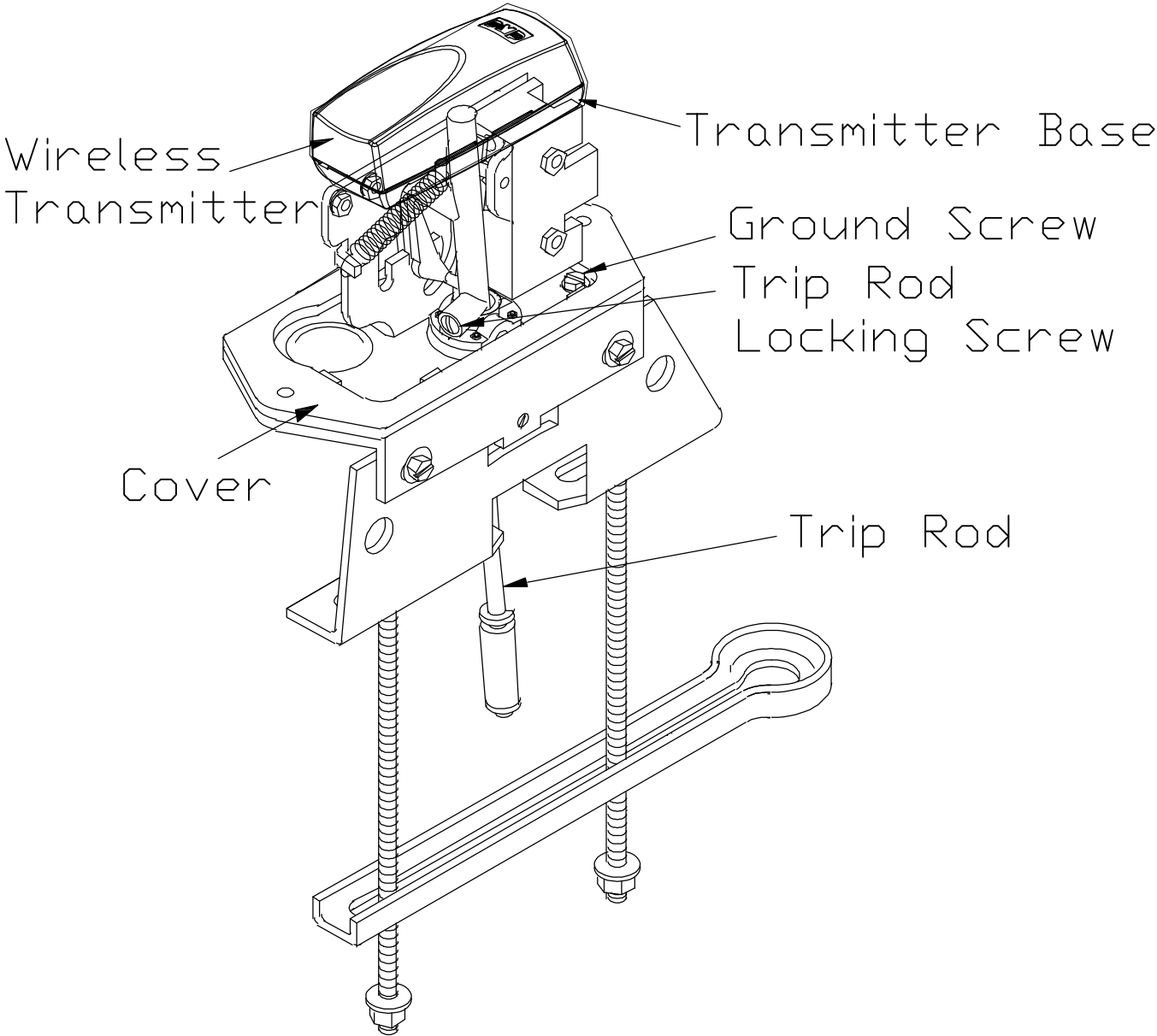


Description

The 1182 OS & Y Switch is used to monitor the open position of an OS & Y (outside screw and yoke) type gate valve. The 1182 mounts conveniently to most OS & Y valves ranging in size from 1/2” to 12”.The 1182 is compatible with the XR100 and XR500 Series panels using an 1100X Wireless Receiver. The contact operates the external contacts of the wireless transmitter when the valve position is altered from an open state.




Specifications

1102 Battery
Life Expectancy 5 years (normal operation)
Type 3.0V lithium CR123
See Battery Life Expectancy for full details.
Frequency Range: 903-927 MHz
Operating Range : -10° F to 120°F

Dimensions

6.19” L x 2.25” W x 5.88” H
Compatibility
1100X Wireless Receiver

Architects and Engineers CAD Drawings		 Digital Monitoring Products 2841 E. Industrial, Springfield, MO 65802	
FILE NAME		TITLE 1182 Wireless OS&Y Tamper	
DRAWN LK	DATE 08-24-09	PART NO.	REV.
CHECKED	SCALE NTS		
APPR'VD	SHEET 1 OF 1		